

Item		Value	Remarks
Max. rated lifting capacity	t	90	
Max. rated lifting moment	t×m	310	
Main boom length	m	12.1 ~ 47.0	
Main boom angle	°	-2 ~ 80	
Max. hoisting speed (main winch)	m/min	140	4 th layer
Max. hoisting speed (2nd winch)	m/min	140	4 th layer
Boom up time	s	60	
Slewing speed	rpm	0 ~ 1.6	
Travelling speed	km/h	0 ~ 2.5	
Gradeability	%	30	
Ground pressure	MPa	0.09	
Dead weight of the crane	t	85.6	Basic boom with primary hook
Counterweight	t	28	
Overall dimensions L×W×H	mm	14630×5100(3400)×3250	
Engine	Model	Cummins QSL9-C280	Optional DONGFENG Cummins QSC8.3-C260
	Rated power/rotational speed	kW/rpm	224/1500 194/2200
	Max. output torque /rotational speed	Nm/rpm	1215/1800 1135/(1300 ~ 1600)
	Emission standard	/	Tier 3 stage IIIA
Distance between two tracks × contact length of track × width of track pad	mm	2600×5440×800	Track carrier retracted
	mm	4300×5440×800	Track carrier extended
Noise	Environment noise during operation	dB	≤107
	Cab noise during operation	dB	≤85

ZOOMLION TELESCOPIC CRAWLER CRANE ZCT900V



ZOOMLION

4.0
PRODUCTS

Zoomlion Heavy Industry Science & Technology Co.,Ltd.

Add: No.677, Lugu Road, Zoomlion Industrial Park, Changsha, Hunan, China, 410205

Copyright©2019 Zoomlion. All rights reserved. Reproduction and copying of any part of contents is not allowed for any purposes without Zoomlion's approval.

Product specifications are subject to change without notice and obligation. The photographs and/or drawing in this document are for illustrative purposes only. Please consult your local ZOOMLION dealer for more information.



website:en.zoomlion.com

ZOOMLION Highlights

- **Stronger lifting capacity:**

5 section U-shaped 47m main boom, with max. lifting moment of 3100kNm, the strongest over the others of same tonnage.

- **High operation efficiency**

Max. hoisting speed reach up to 140m/min for both winches.

Fast boom telescoping by using wire ropes and sheaves.

There are two shifts in travelling speed, max. speed can reach to 2.5km/h

- **Easy and fast transportation**

Transportation width 3m with track carrier retracted.

Total 29.5T counterweight can be fast self-assemble/dis-assembled.

- **Superior off-road performance and flexible**

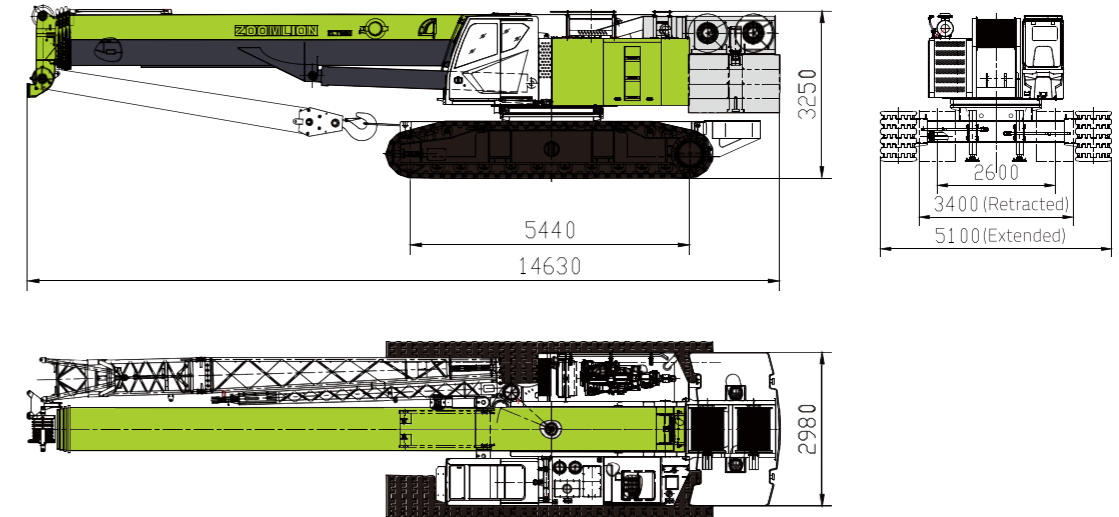
Powerful driving chain with crawler track offers superior off-road performance, and gradeability reaches 30%.

- **High reliable configuration**

High-end configuration with imported Cummins engine, Linder pump and motors, Hirschman LMI.DONGFENG Cummins engine can be optional.

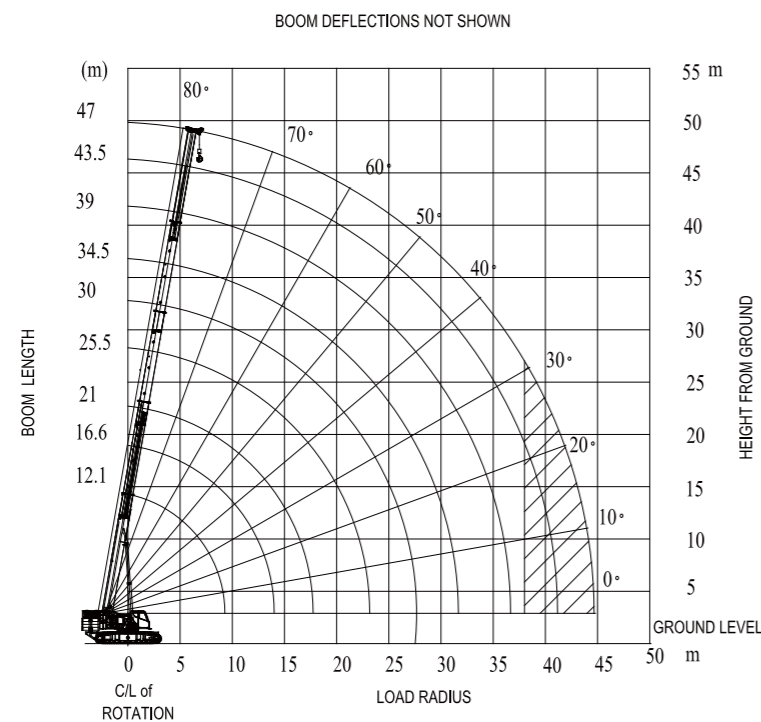
Half decades' accumulation of crane design experience and mature facilities guarantee its quality.

ZOOMLION Main Technical Parameters



Note for Turkey version, the jibs are optional.

ZOOMLION Lifting Height Curve



Note:

•When lifting the load, the crawler should be extended.

•The slope is no big than 1%, hard ground, non-travelling mode, then the rated lifting capacity is guaranteed.

•The rated lifting capacity is based on that wind speed is within 9.8m/s, tipping load ratio 75%.

•The rated lifting capacity is including the weight of the hook and slings. (60T hook weights 0.64T, auxiliary hook weights 0.2t)

ZOOMLION Lifting Capacity Table (without jibs)

Working radius (m)	Telescoping cylinder I fully extended, 29.5T CWT, 7T body CWT, 360°									
	12.1	16.6	21	25.5	30	34.5	39	43.5	47	
3.0	90000	70000								
3.5	84000	65000	50000							
4.0	76000	63000	50000	38000						
4.5	70000	62000	48000	38000						
5.0	63000	60000	48000	38000	36000					
5.5	57000	55000	46000	38000	36000					
6.0	53500	50000	44000	36000	34000	30000				
7.0	41300	41200	38000	34000	32000	29000				
8.0	35000	32800	32000	30600	29000	26000	22000			
9.0	27500	27200	26800	25600	26000	24000	22000	19500		
10.0		22800	22600	22500	22800	22000	21000	18000	14000	
11.0		19500	18800	19800	20000	20000	20000	17000	14000	
12.0		16800	16200	17500	17500	18000	17100	16000	13500	
14.0			12300	13500	13500	13800	14200	14000	12000	
16.0			9500	10800	10800	11200	11500	11500	11000	
18.0				8500	8800	9400	9600	9500	9800	
20.0				6800	7200	7600	7800	8300	8500	
22.0					6000	6300	6600	6800	7200	
24.0					4700	5400	5500	5800	6000	
26.0						4300	4700	4800	5100	
28.0							3400	3800	4300	
30.0								3200	3700	
32.0								2700	3200	
34.0								2100	2700	
36.0									2300	
38.0									1800	
I	0	4.4	8.9	8.9	8.9	8.9	8.9	8.9	8.9	
II	0	0	0	4.5	9	13.5	18	22.5	26	
Reeving	12	10	8	6	6	5	4	4	4	
Hook						60t				