

ZOOMLION TELESCOPIC CRAWLER CRANE ZCT550



ZOOMLION

4.0
PRODUCTS

Zoomlion Heavy Industry Science & Technology Co.,Ltd.

Add: No.677, Lugu Road, Zoomlion Industrial Park, Changsha, Hunan, China, 410205

Copyright©2019 Zoomlion. All rights reserved. Reproduction and copying of any part of contents is not allowed for any purposes without Zoomlion's approval.



website:en.zoomlion.com

Product specifications are subject to change without notice and obligation. The photographs and/or drawing in this document are for illustrative purposes only. Please consult your local ZOOMLION dealer for more information.

ZOOMLION Highlights

- **Stronger lifting capacity:**

5 section U-shaped 42.7m main boom, with max. lifting moment of 2160kNm, the strongest over the others of same tonnage.

- **High operation efficiency**

Compound movements can be reached while keep the original speed.

Max. hoisting speed reach up to 130m/min.

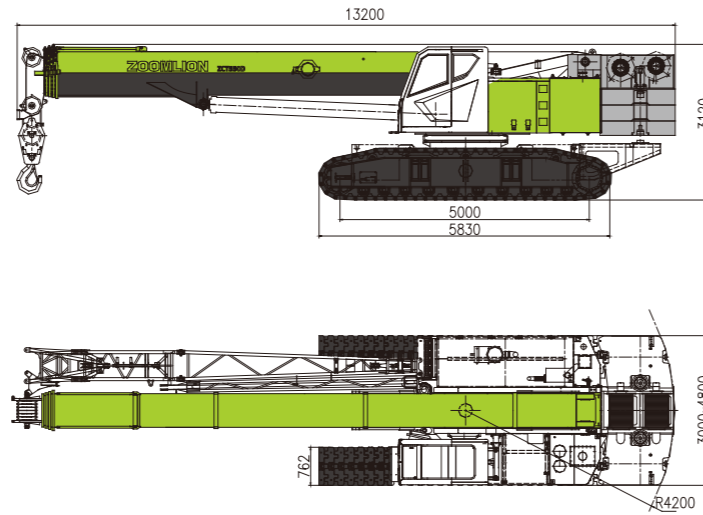
- **Easy and fast transportation**

Transportation width 3m with track carrier retracted.

Total 20T (7+6.5+6.5) counterweight can be self-assemble/dis-assembled.

- **Superior off-road performance and flexible**

Powerful driving chain with crawler track offers superior off-road performance, and gradeability reaches 45%



ZOOMLION Lifting capacity table

Working radius (m)	Telescoping cylinder I fully extended, 20t counterweight						
	11.1	15	19	25	31	37	42.7
3	55000	43000	36000				
3.5	51500	43000	36000				
4	50000	43000	36000	27000			
4.5	49000	42500	36000	27000			
5	42000	41000	34000	27000	20500		
6	32000	32000	30000	26000	20500		
7	24500	24000	24000	24000	20000	15500	
8		19000	19500	20700	20000	15000	
9		16000	15600	16500	17000	14500	10500
10		13500	13000	14000	15000	14000	10200
12			9500	10300	11000	11500	10000
14			7200	8000	8500	9000	9000
16				6300	6900	7300	7600
18				5000	5500	5800	6200
20				3800	4500	4800	5100
22					3700	4000	4200
24						3050	3600
26							2800
28							2300
30							1900
32							1800
34							1500
36							900
Hook				55t			

ZOOMLION Main Technical Parameters

Item		Value	Remarks
Max. rated lifting capacity	t	55	
Max. rated lifting moment	t×m	216	
Main boom length	m	11.1 ~ 42.7	
Jib length	m	7.5 ~ 12.8	
Max. main boom length + jibs	m	55.5	
Main boom angle	°	-2 ~ 80	
Jib offset	°	0, 15, 30	4 th layer
Max. hoisting speed (main winch)	m/min	130	4 th layer
Max. hoisting speed (2nd winch)	m/min	130	
Boom up time	s	50	
Slewing speed	rpm	0 ~ 1.8	
Travelling speed	km/h	2.4 (without load) 1.3 (full load)	
Gradeability	%	45	Basic boom with primary hook
Ground pressure	MPa	0.065	
Dead weight of the crane	t	62.7	
Counterweight	t	20	
Overall dimensions L×W×H	mm	13200×4800(3000)×3120	
Engine	Model	WP6G190E301	WEICHAI
	Rated power/rotational speed	kW/rpm	140/2000
	Max. output torque /rotational speed	Nm/rpm	860/1300
	Emission standard	/	Off-road National III
Distance between two tracks × contact length of track × width of track pad	mm	2240×5000×760	Track carrier retracted
	mm	4040×5000×760	Track carrier extended
Noise	Environment noise during operation	dB	≤107
	Cab noise during operation	dB	≤85

Product specifications are subject to change without notice and obligation. The photographs and/or drawing in this document are for illustrative purposes only. Please consult your local ZOOMLION dealers for more information.