

CRAWLER CRANE ZCC5000



ZOOMLION

Zoomlion Heavy Industry Science & Technology Co.,Ltd.

Add: No.677, Lugu Road, Zoomlion Industrial Park, Changsha, Hunan, China, 410205

Copyright©2017 Zoomlion. All rights reserved. Reproduction and copying of any part of contents is not allowed for any purposes without Zoomlion's approval.



website.en.zoomlion.com

ZOOMLION

4.0
PRODUCTS

Vision Creates Future

50 YEARS OF PRODUCT R&D ESSENCE
50 YEARS OF PROFESSIONAL MANUFACTURING EXPERIENCE
ZOOMLION CRAWLER CRANERON
IRON SHOULDERS TAKE DUTIES!

As the only high-tech listed company incubated from national research institute, Zoomlion is dominating the crowded crawler crane market by virtue of decades of technology accumulation of research and development on chassis, complete vehicle, structure and electro-hydraulic control and its professional crawler manufacturing base second to none in China. It has created many history records and surpassed dreams one after another. ZCC550H-1, ZCC750H-1, ZCC850H, ZCC1100H, ZCC1300, QUY180, ZCC1800, ZCC2600, ZCC3800S, QUY350, ZCC5000, QUY650, ZCC8800W, QUY800, ZCC12500, ZCC3200NP..... Zoomlion has been a strong presence and is giving full play to its capabilities at various construction fields around the world.

Innovation is what sustains a brand. And only by continuous improvement can the new generation of comprehensively upgraded Zoomlion crawler cranes strike a pose on the stage and continue its resplendence.

CONTENTS

ZCC 5000 DIMENSION AND MAIN PARAMETER

Super-lift boom working condition and dimension	01
Super-lift Luffing jib working condition and dimension	01
Crane operation without D and B	02
Crane operation with D and B	04
Transport dimensions and weights of main components	05

ZCC 5000 TECHNICAL DESCRIPTIONS

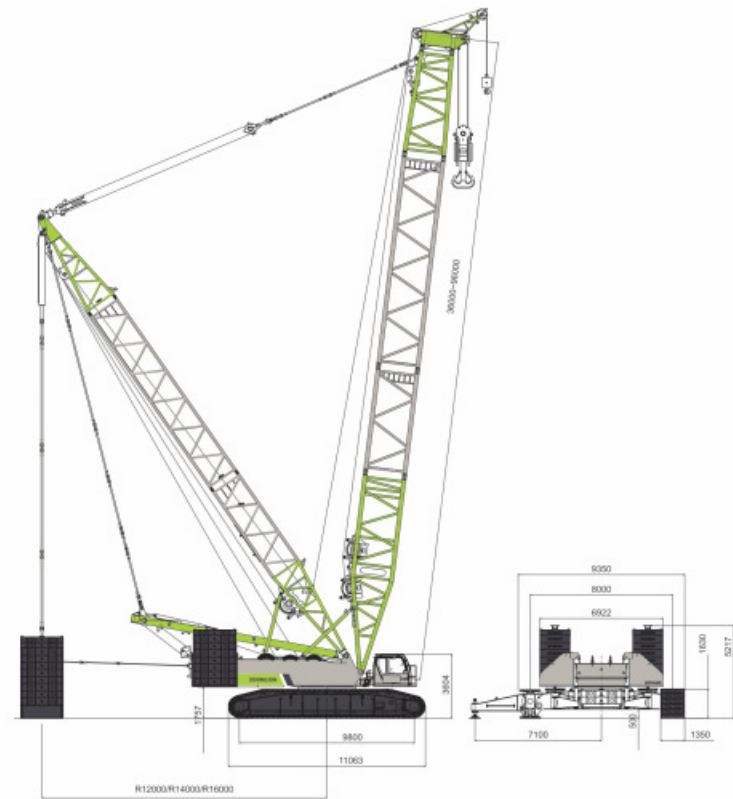
Engine	11
Hydraulic system	11
Hoisting winch	11
Derricking winch	11
Slewing mechanism	12
Traveling mechanism	12
Load hook	12
Crane counterweight	12
Safety device	12

ZCC 5000 LIFTING PERFORMANCE

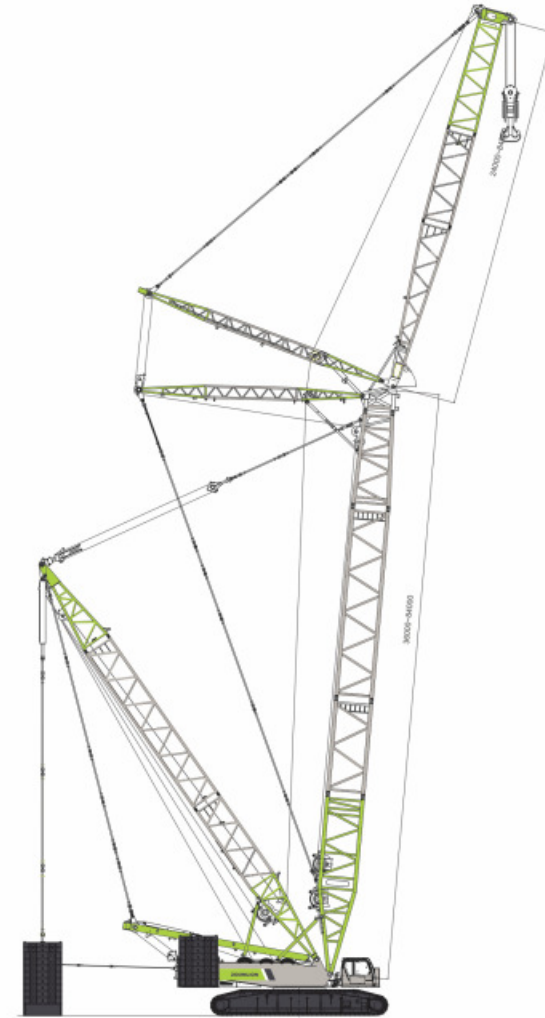
Lifting performance on S boom	13
Lifting performance on SL boom	14
Lifting performance on SHS boom	15
Lifting performance on SW boom	16
Lifting performance on SDB boom	19
Lifting performance on SLDB boom	21
Lifting performance on SWDB boom	22

OVERALL DIMENSION AND MAIN PARAMETER

Super-lift boom working condition and dimension

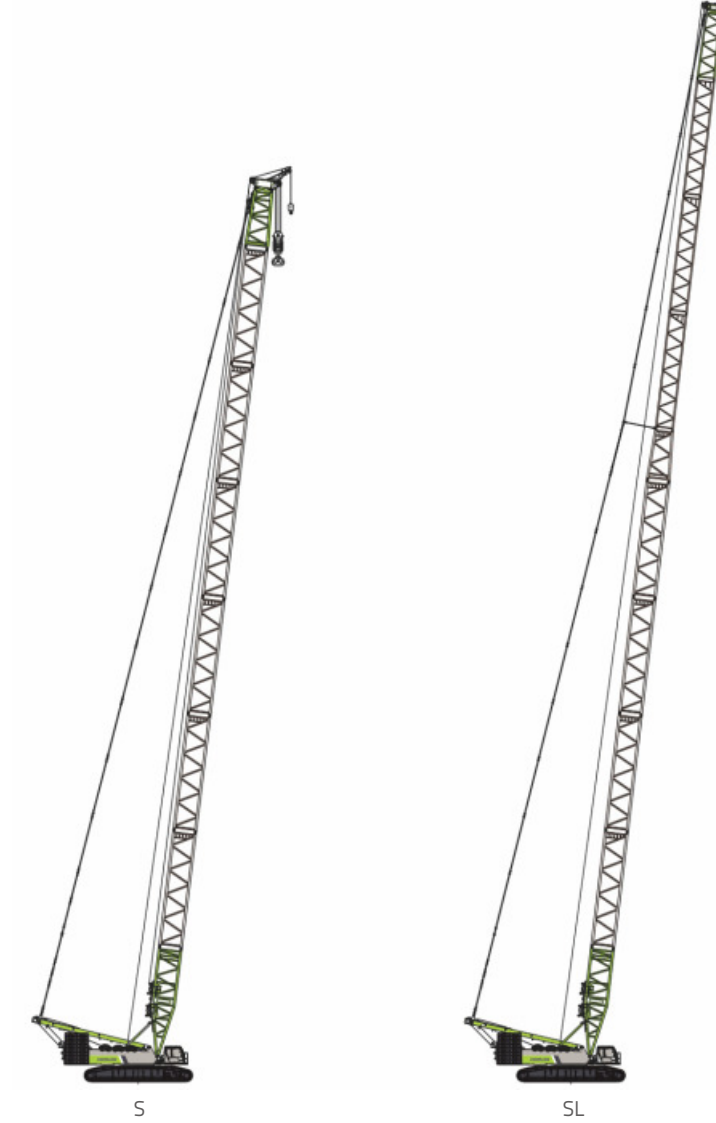


Super-lift Luffing jib working condition and dimension



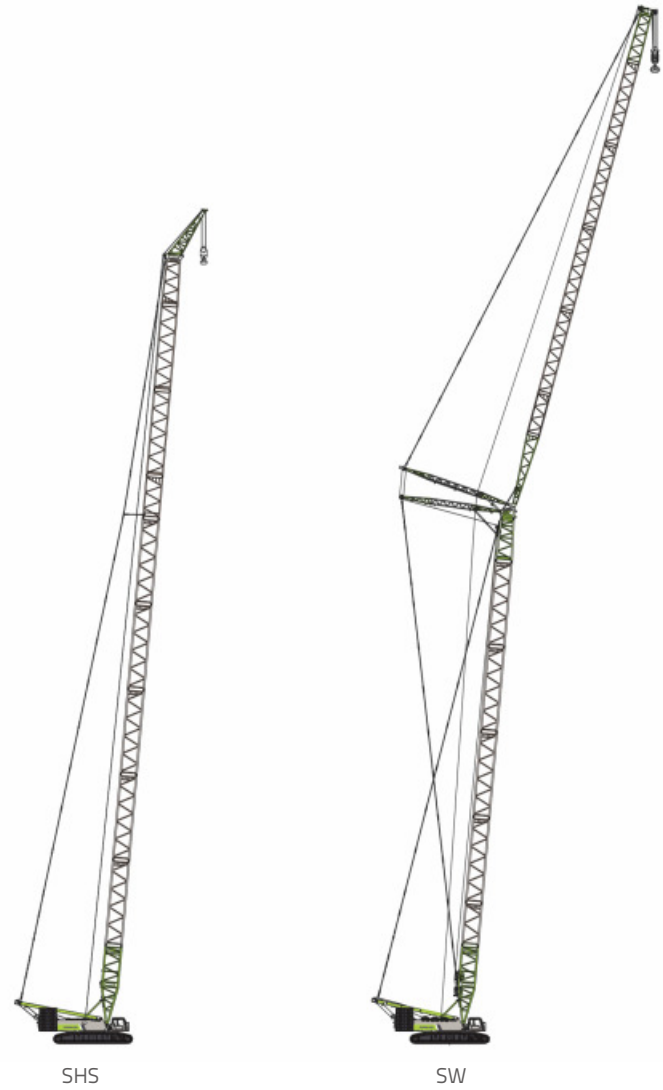
BOOM CONFIGURATION

Crane operation without D and B



Boom configurations	Description	Working parameters
S	Heavy duty boom	S = 24 - 90 m
SL	Light duty boom	S = 48 - 108 m

BOOM CONFIGURATION



Boom configurations	Description	Working parameters
SHS	Wind plant jib on light duty boom	S = 84 - 108 m HS = 7 m
SW	Luffing jib on heavy duty boom	S = 30 - 60 m W = 24 - 72 m

BOOM CONFIGURATION

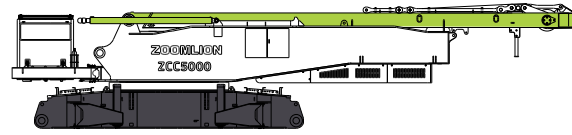
Crane operation with D and B



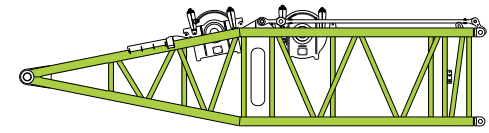
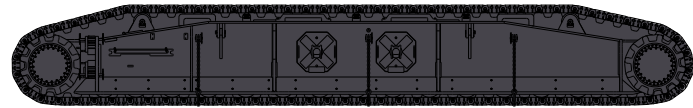
Boom configurations	Description	Working parameters
SDB	Heavy duty boom (with derrick boom and suspended ballast)	S = 36 - 96 m
SLDB	Light duty boom (with derrick boom and suspended ballast)	S = 78 - 126 m
SWDB	Luffing jib on heavy duty boom (with derrick boom and suspended ballast)	S = 36 - 84 m W = 24 - 84 m

TRANSPORT DIMENSIONS AND WEIGHTS OF MAIN COMPONENTS

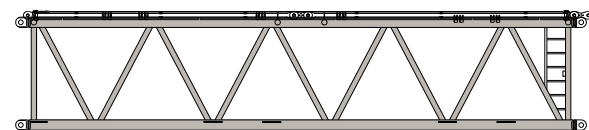
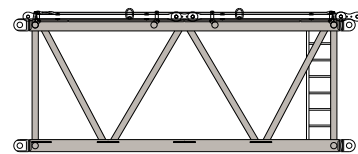
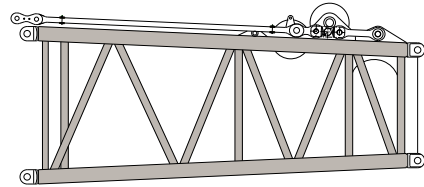
Transport components



This weight excludes hoisting winches 1 and 2. The transport weight is 48.6 t without A-frame



Including luffing jib derricking winch and hoisting winch 3



Description	Weight
Slewing table	x1
Length	15485 mm
Width	3345 mm
Height	3435 mm
Weight	60.8 t

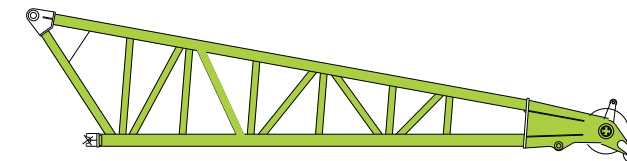
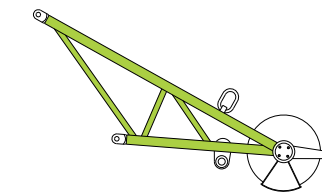
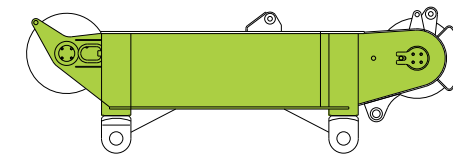
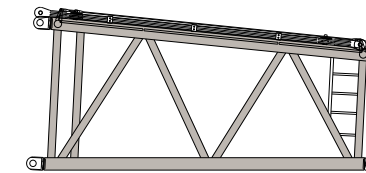
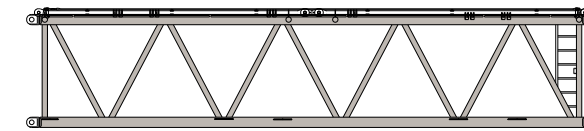
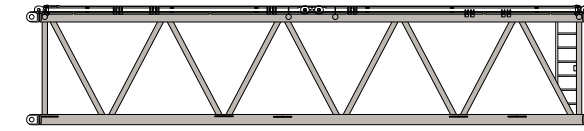
Description	Weight
Crawler carrier	x2
Length	11180 mm
Width	1520 mm
Height	1645 mm
Weight	35.1 t

Description	Weight
Main boom pivot section	x1
Length	11615 mm
Width	3280 mm
Height	3000 mm
Weight	16.9 t

Description	Weight
Main boom head	x1
Length	6220 mm
Width	2920 mm
Height	2780 mm
Weight	5.1 t

Description	Weight
6 m main boom intermediate section	x1
Length	6220 mm
Width	2920 mm
Height	2560 mm
Weight	3.9 t

Description	Weight
12 m main boom intermediate section A	x2
Length	12220 mm
Width	2920 mm
Height	2560 mm
Weight	7.1 t



Description	Weight
12 m main boom intermediate section B	x3
Length	12220 mm
Width	2920 mm
Height	2560 mm
Weight	6.7 t

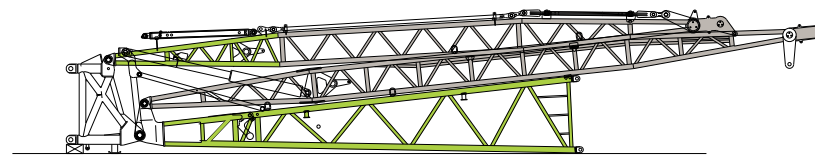
Description	Weight
12 m main boom intermediate section C	x1
Length	12220 mm
Width	2920 mm
Height	2560 mm
Weight	6.7 t

Description	Weight
Reducing section	x1
Length	5470 mm
Width	2900 mm
Height	2540 mm
Weight	3.3 t

Description	Weight
500 t main boom head	x1
Length	3270 mm
Width	2560 mm
Height	1320 mm
Weight	3.7 t

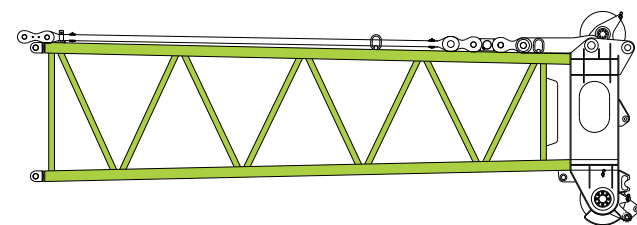
Description	Weight
Tip boom	x1
Length	2530 mm
Width	870 mm
Height	1330 mm
Weight	0.23 t

Description	Weight
7 m Tip boom for SHS boom configuration	x1
Length	8190 mm
Width	1680 mm
Height	1800 mm
Weight	2.75 t

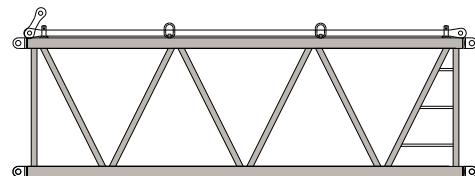


Including main boom head, luffing jib pivot section, WA-frames 1 & 2 and tilting-back system for luffing jib etc.

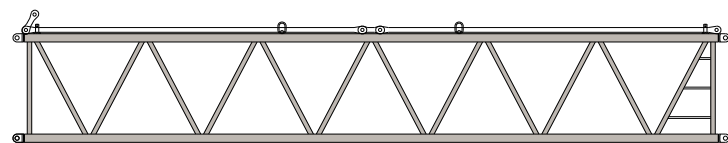
Luffing jib combination transportation	×1
Length	18010 mm
Width	2615 mm
Height	3420 mm
Weight	16.4 t



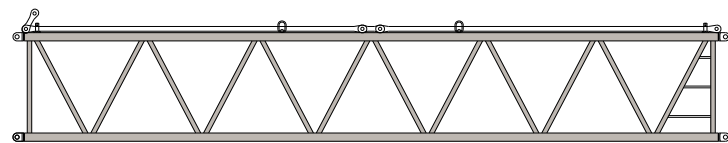
Luffing jib head	×1
Length	8065 mm
Width	2440 mm
Height	2830 mm
Weight	4.7 t



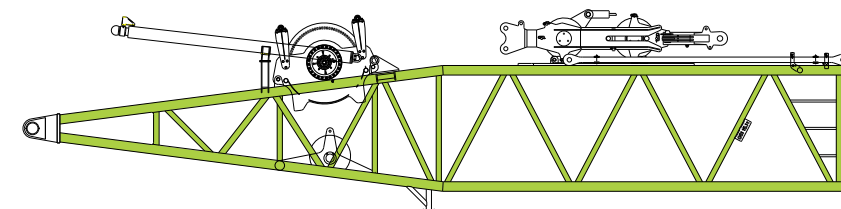
6 m luffing jib intermediate section	×1
Length	6140 mm
Width	2440 mm
Height	2000 mm
Weight	2.2 t



12 m luffing jib intermediate section	×4
Length	12140 mm
Width	2440 mm
Height	2000 mm
Weight	3.5 t

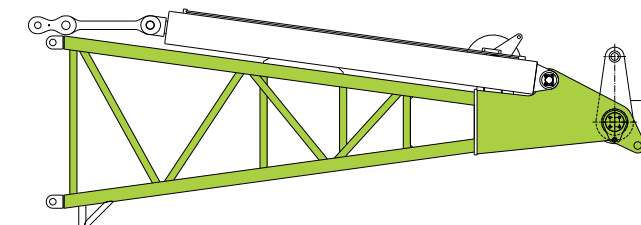


12 m luffing jib intermediate section (heavy)	×1
Length	12140 mm
Width	2440 mm
Height	2000 mm
Weight	3.9 t



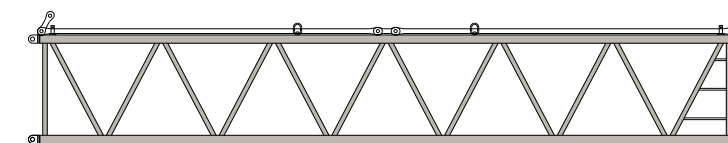
Including superlift derricking pulley block and superlift derricking mechanism

Derrick boom pivot section	×1
Length	12210 mm
Width	2740 mm
Height	2855 mm
Weight	11.7 t

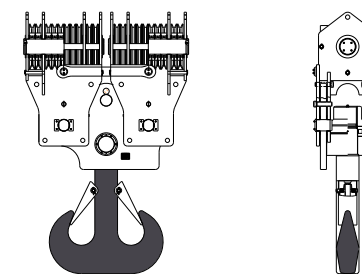


Including suspended ballast lifting cylinder etc.

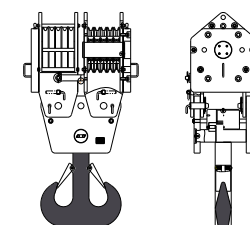
Derrick boom head	×1
Length	6570 mm
Width	2820 mm
Height	2410 mm
Weight	6.6 t



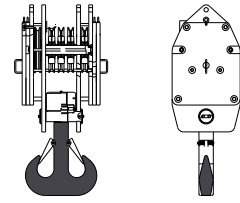
12 m Derrick boom intermediate section	×1
Length	12140 mm
Width	2440 mm
Height	2000 mm
Weight	4.2 t



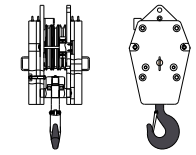
500 t load hook	×1
Length	2180 mm
Width	910 mm
Height	3460 mm
Weight	9.6 t



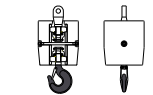
250 t load hook	×1
Length	1515 mm
Width	1000 mm
Height	2835 mm
Weight	5.7 t



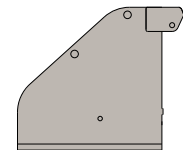
160 t load hook	×1
Length	1235 mm
Width	900 mm
Height	2520 mm
Weight	4.5 t



50 t load hook	×1
Length	900 mm
Width	800 mm
Height	1900 mm
Weight	2.7 t



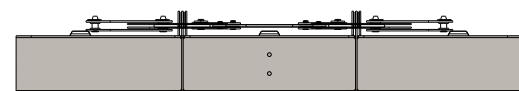
16 t load hook	×1
Length	530 mm
Width	530 mm
Height	1140 mm
Weight	0.9 t



Rear counterweight base plate	×2
Length	2200 mm
Width	2625 mm
Height	1890 mm
Weight	5.2 t

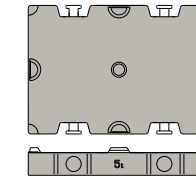


Central counterweight support	×2
Length	2270 mm
Width	2320 mm
Height	780 mm
Weight	1 t

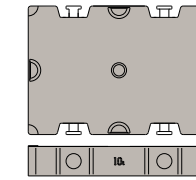


Suspended ballast base plate	×1
Length	6700 mm
Width	2400 mm
Height	1062 mm
Weight	5.4 t

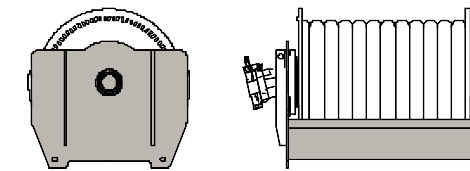
Including parts of suspended ballast anchoring rods



5 t counterweight plate	×11
Length	2400 mm
Width	1700 mm
Height	365 mm
Weight	5 t

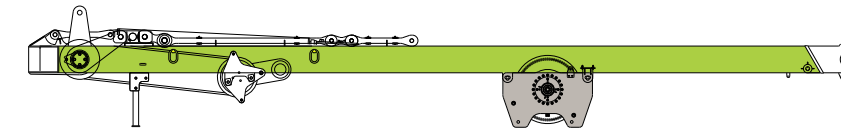


10 t counterweight plate	×36
Length	2400 mm
Width	1700 mm
Height	455 mm
Weight	10 t



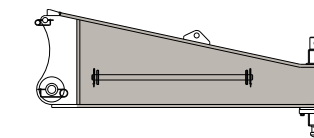
Hoisting winch 1	×2
Length	1920 mm
Width	1275 mm
Height	1235 mm
Weight	5.4 t

Including hoisting rope

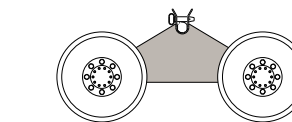


A-frame and main boom derricking winch	×1
Length	12465 mm
Width	3345 mm
Height	1475 mm
Weight	12.2 t

Including main hoist rope and main hoist pulley block



Additional support	×2
Length	2985 mm
Width	510 mm
Height	1275 mm
Weight	1.9 t



Running wheel	×1
Length	2340 mm
Width	2581 mm
Height	1055 mm
Weight	1.75t

TECHNICAL DESCRIPTION



Engine

Engine brand----Mercedes Benz
 Rated power----360kw/1800rpm
 Max. output torque---2200Nm/1300rpm
 Fuel tank -----700L
 Exhaust emissions according to EU Stage IIIA and U.S. EPA Tier 3



Hydraulic system

The crane has hoisting hydraulic system, derricking hydraulic system, slewing hydraulic system, traveling hydraulic system, tilting-back support hydraulic system, suspended ballast lifting hydraulic system, cooling system, auxiliary hydraulic system and so on. Electro-hydraulic proportional control elements facilitate precise and intelligent control. In addition, the hydraulic system is installed with different alarm functions to check if the pressure of working mechanism is normal and the filter is clogged, so that the safety and reliability of hydraulic system is improved greatly.
 Working pressure---350bar
 Hydraulic oil tank-----1000 L



Hoisting winch

The crane is fitted with two hoisting winches: hoisting winch 1 and hoisting winch 2. Both of them are composed of imported axial piston variable displacement motor, balance valve, reducer, normally closed brake as well as wire rope. And they are controllable independently. The hoisting rope is a kind of rotation resistant wire rope imported from Germany. Winch synchronization is fitted on the crane to synchronize the hoisting winch 1 and hoisting winch 2.
 Wire rope diameter-----28mm
 Rope length-----790m
 Line pull-----174KN
 Rope speed-----0-137m/mim
 (The hoisting winch 3 is an optional component, and the maximum rope speed on it is 109 m/min.)



Derricking winch

The main boom derricking winch, luffing jib derricking winch and superlift derricking winch are composed of imported axial piston variable displacement motor, balance valve, reducer and normally closed brake as well as wire rope. The derricking rope is a kind of rotation resistant wire rope imported from Germany.

Main derricking winch
 Wire rope diameter-----28mm
 Rope length-----620m
 Line pull-----174KN
 Rope speed-----0-49m/mim

Luffing jib derricking winch
 Wire rope diameter-----28mm
 Rope length-----620m
 Line pull-----174KN
 Rope speed-----0-123m/mim

Superlift derricking winch
 Wire rope diameter-----28mm
 Rope length-----860m
 Line pull-----174KN
 Rope speed-----0-143m/mim



Slewing mechanism

The slewing mechanism has controllable free swing function which can reduce the impacts on the crane and ensure that the slewing motion can be initiated and stopped more stably.
 3-row roller type, external-gearred slewing ring built in the crane, is of strong load-carrying capacity and high precision, which can ensure stable and accurate slewing motion.
 Slewing speed ----- 0 -1.0 r/min



Traveling mechanism

The traveling mechanism is fitted with four hydraulic motors and four traveling reducers (or four hydraulic motors and two traveling reducers). The hydraulic motor, traveling reducers and balance valve are all imported. Using control levers, various traveling movements can be controlled, such as traveling straight ahead/backwards, turning with a crawler, differential steering, turning on spot, traveling with load. This kind of design enables crane to have high maneuverability.
 Track pad-----1520mm
 Traveling speed----- 0 – 1.0km/h (with four drive motors).
 Gradeability-----30%



Load hook

Rotatable load hook with safety catches:
 500 t load hook (250 t × 2): 20 pulleys
 250 t load hook (125 t × 2): 10 pulleys
 160 t load hook: 5 pulleys
 50 t load hook: 3 pulleys
 16 t load hook: cylindrical load hook



Crane counterweight

The crane is outfitted with central counterweight, rear counterweight and suspended ballast (when crane is operated with derrick boom and suspended ballast). The counterweight plates are interchangeable.
 Central counterweight-----weighing 42 t, including 4 counterweight plates of 10 t each, 2 counterweight carrier of 1 t each;
 Rear counterweight-----weighing 160 t, including 14 counterweight plates of 10 t each, 2 counterweight plates of 5 t each, 2 counterweight carrier of 5 t each;
 Suspended ballast----- weighing 250 t, including 20 suspended ballast plates of 10 t each (In actual operation, 2 suspended ballast plates among them are transferred from rear counterweight.), 9 suspended ballast plates of 5 t each, 1 suspended ballast base plate of 5 t.

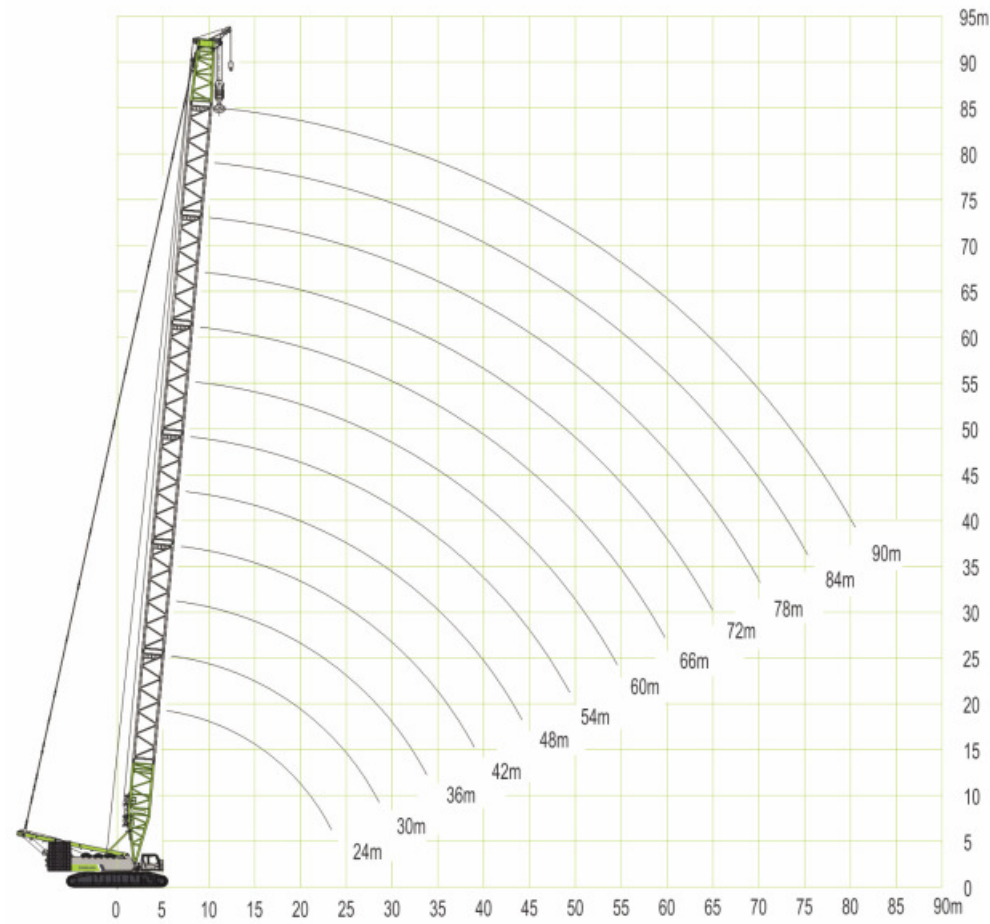


Safety device

Many safety devices, mechanical, electronic or hydraulic, are fitted on the crane to ensure safe operation of crane.
 Load moment limiter
 Overflow valve
 Hoisting limiter
 Angle indicator
 Derricking (luffing) limiter
 Centre-of-gravity detecting device
 Safety catch(hook)
 Anemometer
 Lowering limiter
 Tilting-back support cylinder
 Emergency stop button
 Tricolor warning light
 Monitoring system
 Lightning protection system
 Remote monitoring system GPS

LIFTING PERFORMANCE

Lifting performance on S boom

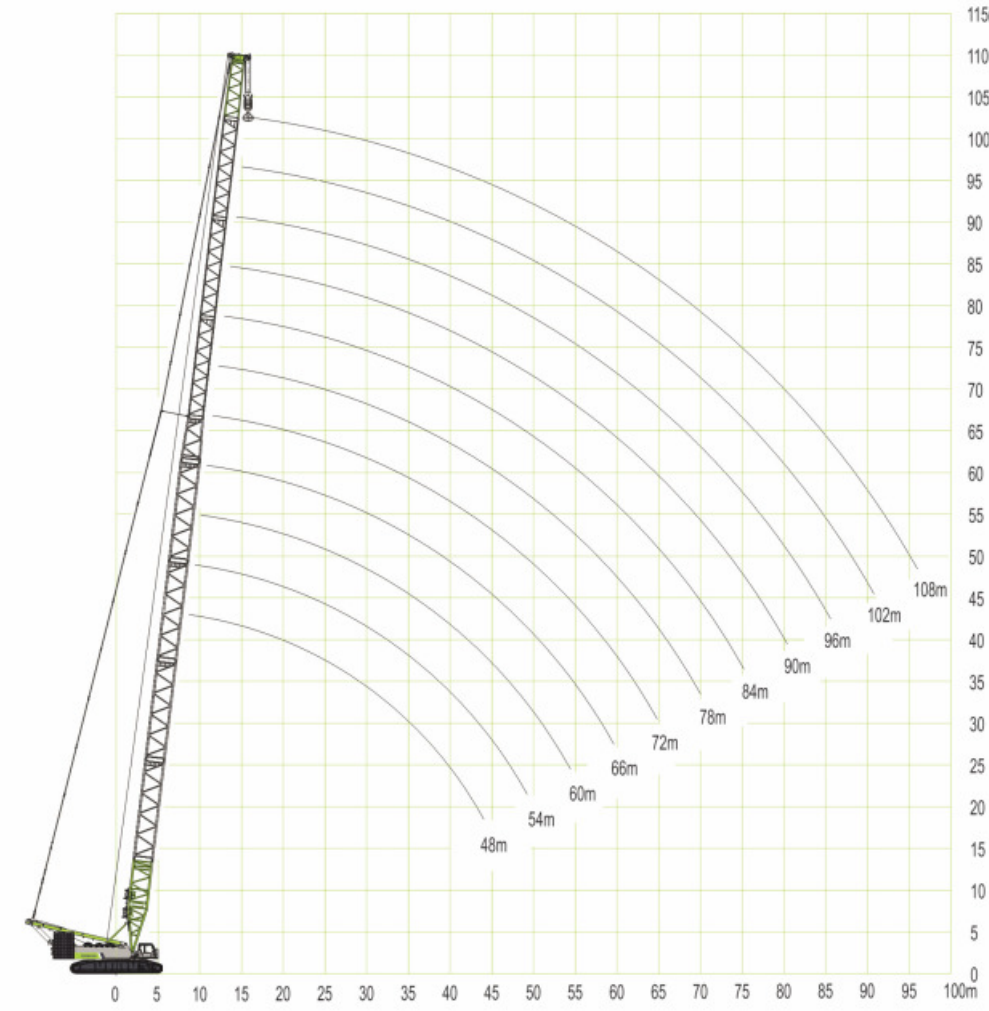


Lifting capacity on S boom
Rear counterweight 160 t, central counterweight 40 t

Length of S	24	30	36	42	48	54	60	66	72	78	84	90
Reeving	2x17	2x17	2x17	2x16	2x14	2x12	2x10	2x9	2x8	2x7	2x6	2x5
Radius	6	7	8	9	10	11	12	14	16	18	20	22
6	500											
7	468	460	455	450								
8	406	400	398	386	365	340						
9	355	350	348	337	316	306	296	284				
10	315	302	298	288	281	265	254	248	233			
11	271	264	260	253	247	240	234	225	212	205	197	
12	240	234	230	223	219	212	208	202	198	185	180	165
14	187	187	185	182	178	174	170	166	163	156	152	150
16	155	155	155	153	149	146	142	139	135	132	128	127
18	131	131	131	129	127	125	122	118	116	114	111	107
20	111	111	111	111	109	107	106	103	101	99.2	96.7	94.2
22	96.7	96.7	96.7	96.7	96.7	95.1	94.2	91.7	90	86.5	85.1	83.6
24		86.1	86.1	86.1	85.1	85.1	83.2	81	79.5	77	75.4	72.9
26		77	77	77	75.4	75.4	74.5	71.9	71.4	68.9	67.9	64.8
28		68.9	68.9	68.9	67.9	67.9	66.4	64.4	63.8	62	59.8	58.2
30			62.3	62.3	61.3	61.3	59.8	58.2	56.5	55.3	54.2	53.2
32			56.7	55.7	55.7	55.1	54.2	53.2	51.3	49.5	49.1	47.6
34				51.6	50.7	50.7	49.1	48.5	47.6	44.6	44.1	42.1
36				46.6	46.6	46	45.1	44.1	42.6	40.4	40	38
38				42.6	42.6	42	41	40	38.5	36.6	36.2	35
40					38.5	38.5	37.9	36.9	36	34.4	33.5	32.9
44					33.5	32.9	31.9	30.4	29.4	28.8	27.9	27.3
48						27.9	27.3	26.3	25.3	23.8	22.8	22.2
52							22.8	22.2	20.3	19.7	18.8	18.2
56								17.8	17.2	16.2	15.2	14.7
60									13.8	12.8	12	11
64										11	9.8	8.1
68											7.4	6.7
72												4.2
72												3.8
Wind speed (m/s)	14.1			12.7				11.3				

LIFTING PERFORMANCE

Lifting performance on SL boom

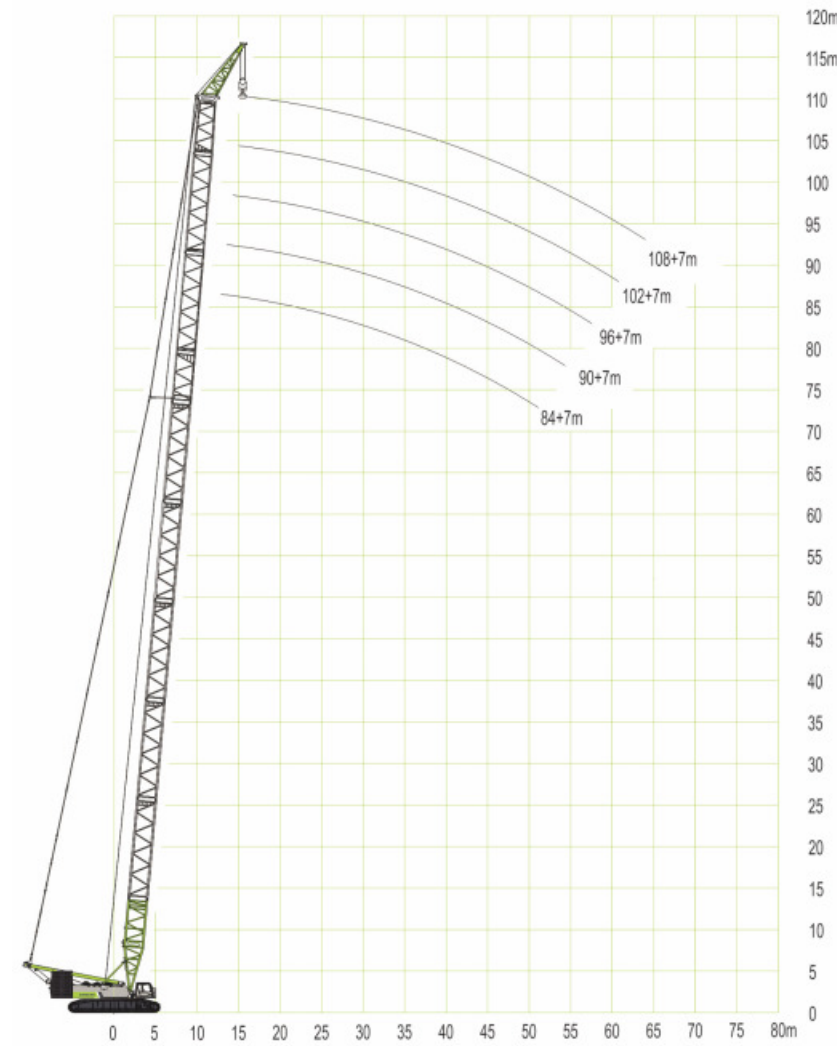


Lifting capacity on SL boom
Rear counterweight 160 t, central counterweight 40 t

Length of S	48	54	60	66	72	78	84	90	96	102	108	
Reeving	2x8	2x8	2x8	2x7	2x6	2x5	2x5	2x4	2x4	6	4	
Radius	9	10	11	12	14	16	18	20	22	24	26	
9	235											
10	235	230	220									
11	223	214	208	196	178							
12	200	193	188	175	170	155						
14	168	164	161	155	151	142	136	130	122	100		
16	141	138	134	132	130	124	121	114	110	98	72	
18	123	120	116	113	111	108	106	101	98	89	70	
20	108	105	102	99	97.9	96.9	94.4	91.9	88.2	82	69	
22	96.9	94	91.5	90	87.5	85.6	83.6	82.6	80	75.6	67.2	
24	85.6	84.6	82.1	79.6	77.8	77.2	74.8	73.2	72	69	64.4	
26	78.2	76.2	74.2	72.3	70.8	69.3	66.9	66.9	64.4	62.9	60.2	
28	69.9	68.9	67.4	65.9	64.4	62.9	62	60.5	58	57	55.6	
30	63.5	62	60.9	60.2	58	58	55.6	54.1	52.6	51.6	50.1	
32	57	56.3	55.4	54.9	53.2	52.6	51.7	50.1	47.7	47.7	46.2	
34	52.1	51.4	50.6	50	49.2	47.7	47.1	46.2	43.8	42.8	42.3	
36	48.2	47.2	46.3	45.7	44.8	43.8	42.8	42.3	40.7	39.8	38.9	
38	43.8	43.4	42.4	42	41.1	40.7	39.8	38.9	37	35.8	34.9	
40	40.8	40.2	39.2	38.8	37.8	37.4	35.9	35.9	32.9	32.4	31.5	
44		34.4	33.4	33.1	31.9	31.9	31	30.4	29.2	27.8	27	
48		29.5	28.6	28.6	27.3	27	26.5	26.1	24.6	23.2	22.7	
52			25.2	24.6	24	24	22.7	22.2	20.2	19.3	19.1	
56				21.2	20.7	20.7	19.5	19.2	17.2	16	15.7	
60					17.6	17.2	16.4	15.7	13.5	12.9	12.3	
64						14.2	13.8	13.1	11.4	10.3	9.8	
68							12.3	11.4	10.8	9.2	8	7.8
72								9	8.6	7.1	5.9	5.4
76									7.5	5.3	4.5	3.5
80										4.2	3.2	1.2
Wind speed (m/s)	12.7				11.3				8.9			

LIFTING PERFORMANCE

Lifting performance on SHS boom



Lifting capacity on SHS boom
Rear counterweight 160 t, central counterweight 40 t

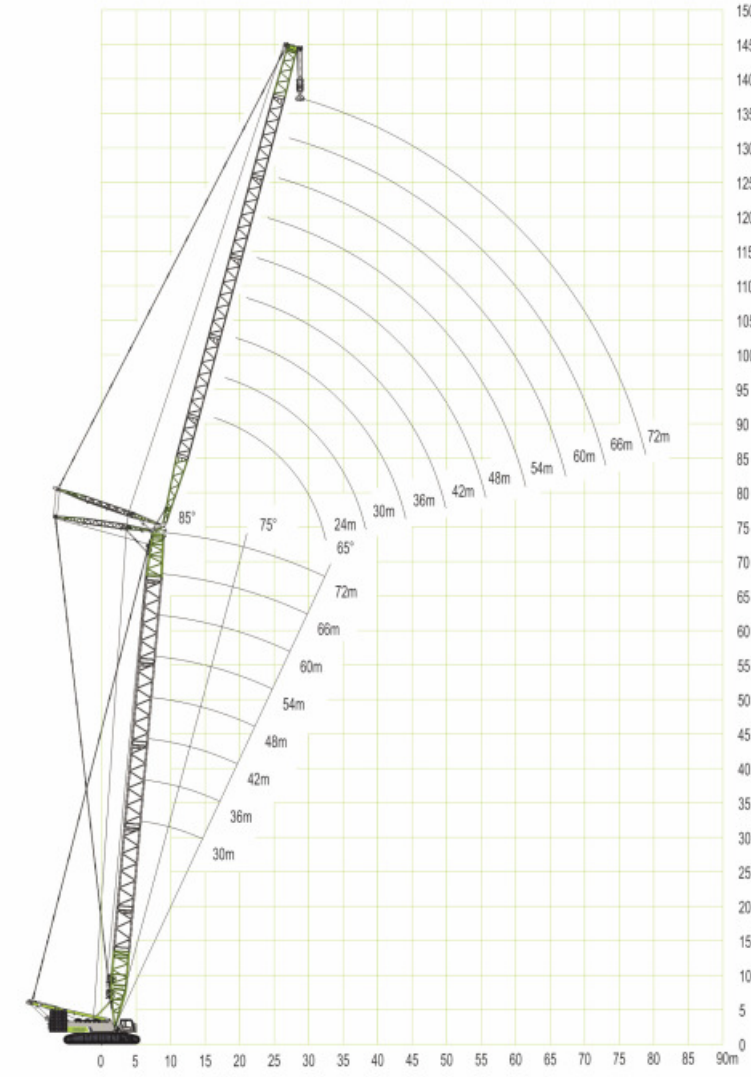
Length of S	84 + 7	90 + 7	96 + 7	102 + 7	108 + 7
Reeving	8	7	7	6	6
Radius					
14	126	122			
16	119	118			
18	113	112	110	102	95
19	109	108	106	100	92
20	106.2	104.3	102.3	98	90
22	99.8	97.9	96.9	95.9	87.5
24	92.7	92.2	91.7	90.7	85.1
26	82.4	81.6	80.4	79.4	78.1
28	74	73.5	72.3	71.5	70.8
30	66.9	66.2	65.6	64.6	63.9
32	60.5	60.2	59.5	59.2	58.5
34	55.3	55.1	54.7	54.1	53.5
36	50.9	50.3	49.9	49.2	48.9
38	47	46.2	45.1	44.2	43.6
40	42.5	41.8	41.2	40.8	40.2
44	39.8	39.2	38.6	38.1	37.6
48	34.7	34.4	33.7	33.2	32.7
52	30.2	29.2	28.6	28.2	27.2
56	26.3	25	24.2	23	22
60	23.1	22.6	21.9	20.9	20.2
64	20.7	20.1	19.3	18.7	17.7
Wind speed (m/s)	11.3		8.9		

NOTE:

1. When raising the heavy duty boom (length of S: 102 + 7 or 108 + 7), do not lift the hook off the ground if the main boom angle is less than 30°.
2. The luffing jib rear anchoring rods cannot be put on the main boom. Otherwise, crane lifting performance will be impaired and the raising of long boom will be affected.
3. Raise main boom with the help of additional supports over sides.

LIFTING PERFORMANCE

Lifting performance on SW boom



Lifting capacity on SW boom
Rear counterweight 160 t, central counterweight 40 t

Length of S	30									
Length of W	24	30	36	42	48	54	60	66	72	
Radius										
13	195.0									
14	174.0	172.0								
16	146.0	144.5	144							
18	123.5	122.5	122	121.5						
20	107.0	106.0	105.5	105.5	104.5	95				
22	94.5	93.5	93	92.5	91.5	91	79			
24	84.0	83.0	82.5	82	81	80.5	77.5	66.5		
26	75.5	74.5	74	73.5	72.5	72	71.5	65	55	
28	67.5	67.0	66.5	66	65	64.5	64	63.5	54.5	
30		61.5	61	60.5	59.5	59	58.5	58	54	
32		56.5	56	55.5	54.5	54	53.5	53	51	
34		52.0	52	51.5	50.5	50	49.5	49	48.5	
36			48	47.5	46.5	46	45.5	45	44.5	
38				44.5	44	43	42.5	42	41.6	41
40					41	40	39.5	39	38.6	38
44						36	35	34.5	34	33.6
48							31	30.5	30	29.6
52								27	26.5	26.1
56									24	23.5
60										23.1
64										21.3
68										20.9
72										20.3
Wind speed (m/s)	12.7		11.3						8.9	

LIFTING PERFORMANCE

Lifting capacity on SW boom
Rear counterweight 160 t, central counterweight 40 t

Length of S	36									
Length of W	24	30	36	42	48	54	60	66	72	
Radius										
14	173									
16	145	143.5	138							
18	122.5	121.5	121.5	116.5						
20	108	105	105	105	100					
22	97.5	93	92.5	92	91	85	71.5			
24	89.7	85	84	81.5	80.5	80	70.5	67.5		
26	82.4	78.5	76.5	74	72	71.5	69.5	62.1	60.1	
28	74	72.6	70.5	68	66	64	63.6	57.5	55.3	
30		67.2	65.6	63	60.6	58.6	58.1	56.5	51	
32		63	61	59	56.5	54.5	53.1	52	49.5	
34		53	57	55	52.7	50.8	49.1	48.7	48	
36			53.5	52	49.5	47.3	45.1	44.7	44.2	
38			50	48	46.4	44.5	42.2	41.3	40.7	
40			43	45	43.6	41.4	39.5	38.3	37.7	
44				39	38.7	36.7	34.7	33.3	32.7	
48					34	32.8	31	29.3	28.7	
52						29.3	27.5	25.8	25.2	
56							23.6	24.5	23	
60								21.8	20.6	
64									18.6	
68									16.5	
72									14	
Wind speed (m/s)	12.7	11.3						8.9		

Lifting capacity on SW boom
Rear counterweight 160 t, central counterweight 40 t

Length of S	42								
Length of W	24	30	36	42	48	54	60	66	72
Radius									
14	172								
16	144	143	129						
18	122	121	121	109					
20	105.5	104.5	104.5	104.5	93				
22	93.5	92.5	92	91.5	90.5	79.5	68.5		
24	83.5	82	81.5	81	80	77.5	67.2	60	
26	76.5	74.5	73	72.5	71.5	71.1	66.2	59.5	54
28	71.5	69	66.5	65	64.1	63.6	62.2	55.5	53.5
30		64.5	61.5	59.5	58.6	58.2	57.7	53	49
32		59.5	57.5	55.5	53.6	53.2	52.7	51	46
34		54.5	53.5	51.5	49.7	49.2	48.7	48.3	44
36			50.5	48.5	46.7	45.2	44.8	44.3	42
38			47.5	45.5	43.5	41.7	41.3	40.9	40.4
40			43	42.5	41.2	39.2	38.3	37.9	37.4
44				38	37.2	34.7	33.3	32.9	32.4
48					33.1	30.7	29.4	28.9	28.4
52						29.1	28.1	26.1	25.4
56							23.2	23.5	22.5
60								20.7	20.3
64									18.5
68									16.2
72									13.7
Wind speed (m/s)	11.3						8.9		

LIFTING PERFORMANCE

Lifting capacity on SW boom
Rear counterweight 160 t, central counterweight 40 t

Length of S	48								
Length of W	24	30	36	42	48	54	60	66	72
Radius									
14	158								
16	143	132							
18	121	120.5	111						
20	105	104	104	97	83.5				
22	93	92	91.5	91	82	73			
24	82.5	81.5	81	80.5	78.5	70	65.5		
26	74	73	72.5	72	71	68	59.5	58	
28	69	66.5	65	64.5	63.6	63.1	56	53.5	51
30		62	59.5	59	58.1	57.7	54.5	48.8	47.5
32		57.5	55.5	54	53.1	52.7	51.4	46.5	43.5
34		54.2	51.8	50	49.2	48.7	48.3	45	40.5
36			48.5	46.5	45.2	44.7	44.4	42.7	38.5
38			45.5	43.8	42.2	41.2	40.9	40.5	37.5
40			41.5	41	39.7	38.2	37.9	37.5	36
44				36.6	35.2	33.3	32.9	32.5	32.1
48					31.2	29.8	29	28.5	28.1
52						25.7	26.7	25.5	25.1
56							23.8	22.6	22.2
60								20.4	20
64									18.2
68									15.9
72									13.4
Wind speed (m/s)	11.3						8.9		

Lifting capacity on SW boom
Rear counterweight 160 t, central counterweight 40 t

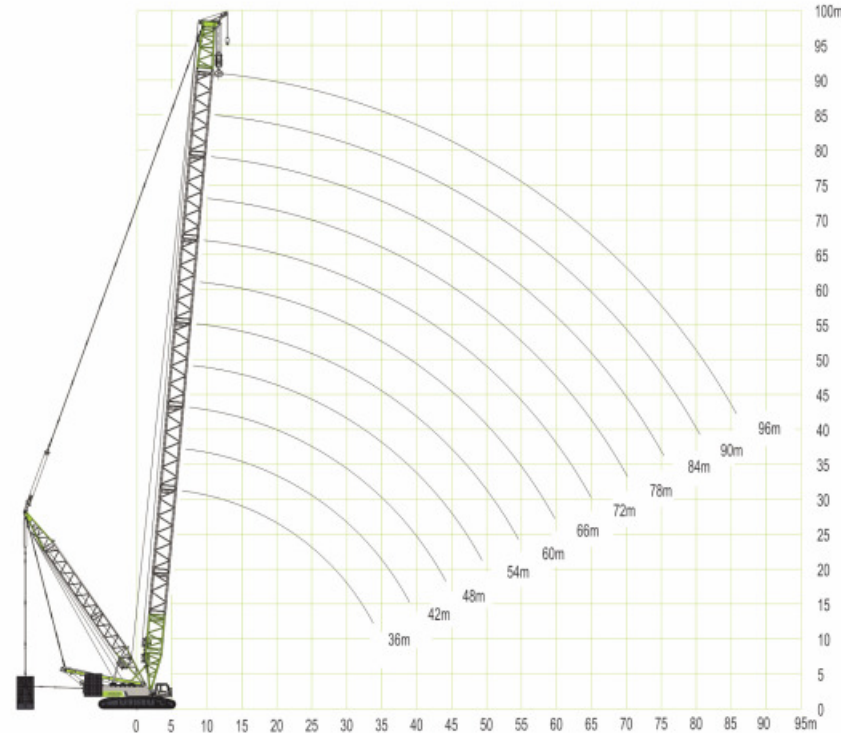
Length of S	54								
Length of W	24	30	36	42	48	54	60	66	72
Radius									
16	137	126.5							
18	120.5	115.5	100.5						
20	104.5	103.5	98.5	85					
22	92.5	91.5	91	83	72.5				
24	82	81	80.5	78.5	71	64.2	62.5		
26	73.5	72.5	72	71.5	67.5	61.7	57.5	55.5	
28	66.5	65	64.5	64	63.1	60.2	53	51.4	49
30	58	59.5	59	58.5	57.6	57.2	48.5	47.3	45.2
32		55.5	54	53.5	52.6	52.2	47	43.6	41.8
34		52	50	49.5	48.7	48.2	45.4	41.1	38.6
36		45	47	45.5	44.7	44.2	43	39.9	35.9
38			44.2	42	41.2	40.7	40.5	38.7	33.8
40			41.5	39.5	38.2	37.7	37.5	37.2	32.7
44				35.2	33.8	32.9	32.5	32.2	30.4
48					30.3	28.9	28.6	28.2	27.7
52						25.3	25.3	25.1	24.8
56							22.6	22.3	21.9
60								20.1	19.7
64									17.9
68									15.6
72									13.1
76									11.2
Wind speed (m/s)	11.3						8.9		

LIFTING PERFORMANCE

Lifting capacity on SW boom
Rear counterweight 160 t, central counterweight 40 t

Length of S	60								
Length of W	24	30	36	42	48	54	60	66	72
Radius									
16	117								
18	112	102	85.5						
20	103.5	98	85.5	80.5					
22	91.5	91	82.5	73.5	70				
24	81.5	80.5	77	71.5	65	62.5			
26	73	72	71.5	67.5	63	56.5	55	49.5	
28	65	64.5	64	63.5	61	53	50.4	49	46.4
30	57.5	59	58.5	58	58	50.5	47.3	45.1	43.4
32		54	53.5	53	53.5	48.5	44.2	42.2	40.2
34		49.8	49.5	49	48.2	46.5	40.5	38.6	36.8
36		44.5	45.5	45	44.2	43.5	38.7	36.3	34.5
38			42.5	41.5	40.7	40.2	37.2	34.3	32.2
40			40.5	38.6	37.7	37.2	35.5	31.3	29.7
44				33.8	33	32.5	32	29.2	27.5
48					28.8	28.9	28.5	28.2	26.8
52						25	25	24.8	24.4
56							22.1	22	21.6
60								19.8	19.4
64									17.6
68									
72									
76									
Wind speed (m/s)	11.3			8.9					

Lifting performance on SDB boom



LIFTING PERFORMANCE

Lifting capacity on SDB boom
Suspended ballast 0 – 250 t, D-radius 16 m,
rear counterweight 140 t, central counterweight 40 t

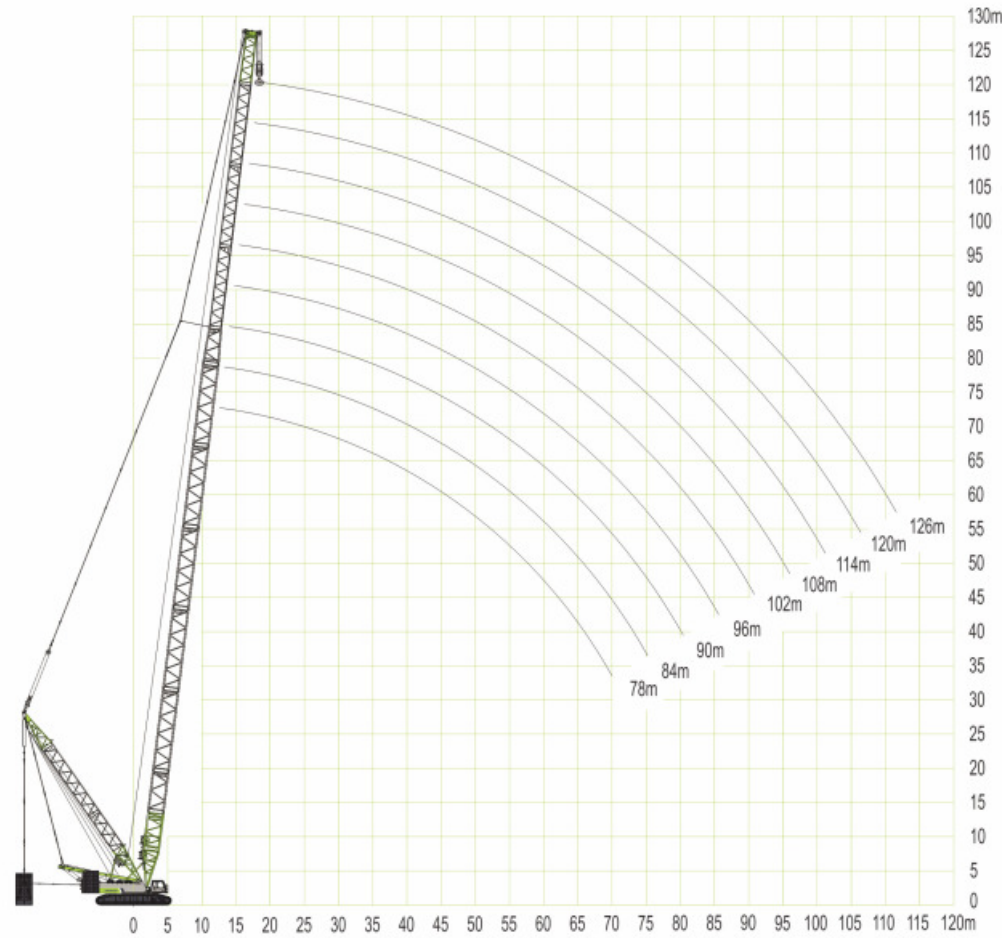
Length of S	36	42	48	54	60
Reeving	2 x 17	2 x 16	2 x 14	2 x 13	2 x 10
Radius					
8	500	500			
9	500	500	442	383	
10	500	500	442	383	352
11	500	500	442	383	352
12	500	480	434	383	352
14	449	449	420	383	352
16	393	392	392	365	352
18	349	348	348	348	322
20	313	313	312	312	305
22	284	284	283	283	282
24	260	259	259	258	257
26	232	238	238	237	237
28	208	220	219	219	218
30	185	203	203	203	202
32		188	189	188	188
34		171	176	176	175
36		155	165	163	163
38			153	153	153
40			144	144	142
44				129	127
48				113	112
52					102
Wind speed (m/s)	14.1		12.7		

Lifting capacity on SDB boom
Suspended ballast 0 – 250 t, D-radius 16 m,
rear counterweight 140 t, central counterweight 40 t

Length of S	66	72	78	84	90	96
Reeving	2 x 9	2 x 8	2 x 7	2 x 6	2 x 5	2 x 4
Radius						
10	296					
11	296	260	229			
12	296	260	229	197	165	
14	296	260	229	197	165	133
16	296	260	229	197	165	133
18	296	260	229	197	165	133
20	291	260	229	197	165	133
22	281	260	229	197	165	133
24	257	254	229	197	165	133
26	236	233	225	197	165	133
28	217	214	212	197	165	133
30	201	199	196	193	165	133
32	187	185	182	180	165	133
34	174	172	170	168	160	133
36	163	162	159	157	155	133
38	153	152	150	147	145	133
40	142	142	141	139	137	128
44	127	125	125	124	122	120
48	111	111	111	110	109	107
52	100	100	99.2	99.2	96.7	96.7
56	92.7	90.2	90.2	89.2	87.6	87.6
60		82	82	81.1	79.5	79.5
64		75.4	75.4	72.9	72.9	71.4
68			68.9	67.9	66.4	66.4
72				62.3	61.3	59.8
76					55.7	55.7
80						50.7
Wind speed (m/s)	11.3			8.9		

LIFTING PERFORMANCE

Lifting performance on SLDB boom



Lifting capacity on SLDB boom
Suspended ballast 0 – 250 t, D-radius 16 m,
rear counterweight 140 t, central counterweight 40 t

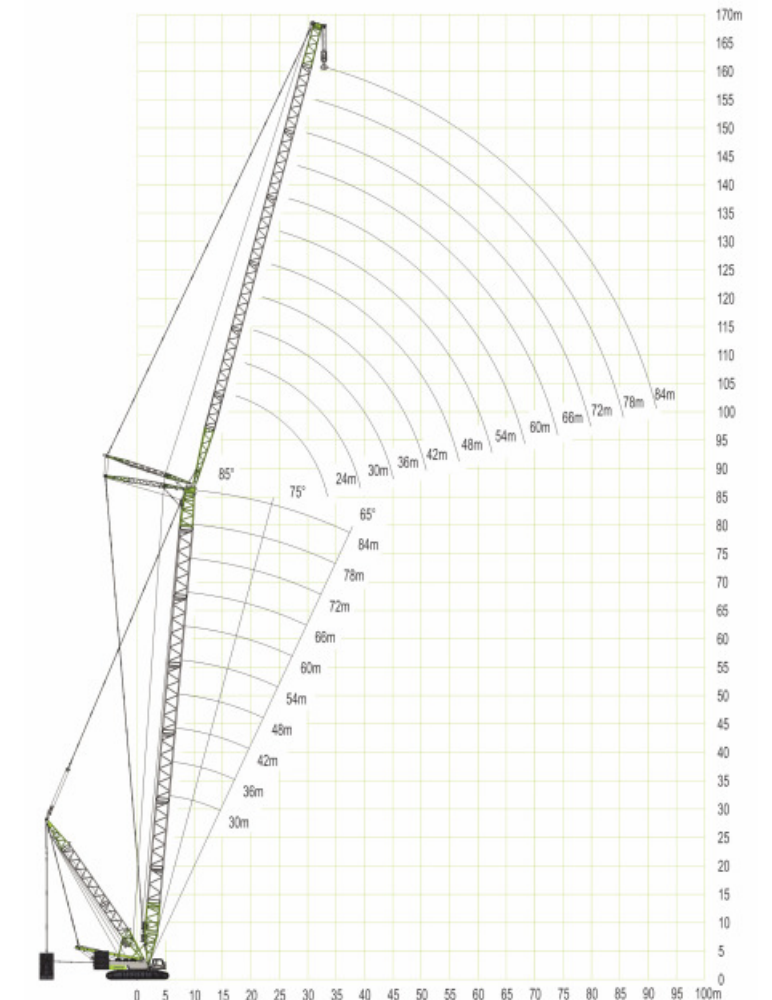
Length of S	78	84	90	96	102	108	114	120	126
Reeving	2x7	2x6	2x5	2x4	2x4	2x3	5	5	4
Radius	220	187	157.5						
10	220	187	157.5						
11	220	187	157.5	133.5	114.5				
12	220	187	157.5	133.5	114.5				
14	220	187	156.5	133.5	114.5	98.6	85.6	75.5	65
16	220	187	156.5	133.5	114.5	98.6	85.6	75.5	65
18	219	187	156.5	133.5	114.5	98.6	85.6	74.5	65
20	216.3	185.3	155.9	133.5	114.5	98.5	85.2	74.5	65
22	214.2	185.3	155.4	133.5	113.4	98.5	85.2	73.5	65
24	212.1	185.3	154.9	133.5	113.3	97.9	85.2	73.5	65
26	201.6	185.3	154.4	132.3	113.2	97.5	84.5	71.4	64
28	190.5	178	152.3	132.3	113.1	97.2	82.2	69.4	64
30	182.7	171.2	147.5	130.2	112.5	95.8	78.7	66.3	63
32	174.3	163.5	142.8	128.1	112.2	92.7	76.1	64.8	60
34	165.9	155.9	138.1	126	111.4	89.2	75.6	62.3	58.2
36	159	149.6	133.4	123.4	109	85.8	74	61.7	56.7
38	150.4	143.3	128.6	120.8	106.6	84.1	72.5	59.2	55.7
40	142.6	138.3	125	116	104.5	82.4	71.4	57.2	52.6
44	127.9	126	118.1	107.4	100.8	78.9	69.8	54.6	50
48	115.2	113.3	111.3	101.2	92.2	75.3	65.1	52.5	46
52	103.5	102.5	101.6	96	88.4	72	61.4	51.4	42.4
56	92.8	93.5	92.8	90.3	82.1	68.8	58.3	48.3	40.8
60	83	84	85	84	75.6	65.6	55.6	46.3	37.8
64	74.2	75.4	77	76.2	69.8	62	54	45.7	36.7
Wind speed (m/s)	11.3	8.9							

LIFTING PERFORMANCE

Lifting capacity on SLDB boom
Suspended ballast 0 – 250 t, D-radius 16 m,
rear counterweight 140 t, central counterweight 40 t

Length of S	78	84	90	96	102	108	114	120	126
Reeving	2x7	2x6	2x5	2x4	2x4	2x3	5	5	4
Radius	65.4	68.1	69.5	70.3	63.6	59.4	51.6	42	35.2
68	65.4	68.1	69.5	70.3	63.6	59.4	51.6	42	35.2
72		61.5	62.8	64.5	58.8	56.9	50.6	39.4	33.1
76			56.6	58.3	56	52.8	48.8	37.5	31
80				52.7	53.1	50.4	47.8	36.6	29.9
84				46.9	48.8	48	45.2	34.1	28.2
88					43.9	43.9	42.7	32.5	26.8
92						40	39.2	31.5	25.4
96							37.1	30.6	24.2
100							33.2	29.2	23.1
104								29.8	21.9
108									20.9
Wind speed (m/s)	11.3	8.9							

Lifting performance on SWDB boom



LIFTING PERFORMANCE

Lifting capacity on SWDB boom (S-boom angle 85°)
Suspended ballast 0 – 250 t, D-radius 16 m,
rear counterweight 140 t, central counterweight 40 t

Length of S	36										
Length of W Radius	24	30	36	42	48	54	60	66	72	78	84
14	245										
16	245	232.4									
18	245	229.5	191.8	161							
20	228	216.8	185.2	157	132.8						
22	205.1	204.1	178.6	153	130.4	113	95.4				
24	188.5	194.4	170.1	148.4	127.5	111	95.4	83.4			
26	170.5	182.5	161.6	142.7	124.7	108	93.5	82.5	70.7		
28	153	167.2	154	137	121	105	92.2	81.2	69.8	61	
30		151.4	144	131.4	117.2	102	89.9	79.9	68.8	60.3	51.5
32		133.8	135	124.7	111.5	98.6	88	78	67.8	59.5	50.5
34		118	124.2	119.1	107.7	95.2	85	76.5	66.6	58.9	49.1
36			114.3	112.5	103	92.5	83.5	74.7	65.3	57.8	48.1
38			102.1	105.8	99.2	88.6	81	72.7	64.2	56.6	47.2
40			91	96.4	94.1	84.5	78	70.8	63	55.5	46.2
44				82.9	85.3	79.5	73.5	67	61.5	53.4	44.6
48					71.8	73.4	67.6	62.8	59.2	51.2	42.8
52					59	65	62.5	58.6	56	48.7	41
56						52	57.5	54.7	52	46	39.2
60							50.5	50.6	48.5	43.8	37.2
64								45.8	45	40.7	35
68									41	40.6	33.8
72										35.2	33.1
76											29.8
80											26.8
84											21.5
Wind speed (m/s)	12.7	11.3					8.9				

Lifting capacity on SWDB boom (S-boom angle 85°)
Suspended ballast 0 – 250 t, D-radius 16 m,
rear counterweight 140 t, central counterweight 40 t

Length of S	42										
Length of W Radius	24	30	36	42	48	54	60	66	72	78	84
14	235										
16	235	217.4									
18	232	209.8	180	150							
20	225	200.3	173	149.3	127.6						
22	212	189.9	166.3	144.6	124.7	107.7					
24	193.8	179.6	158.8	139.9	121.9	105.8	91.5				
26	174.8	169.2	152.1	134.2	118.1	103	89.5	79			
28	152	157.8	144.6	128.5	114.3	100.2	87.9	77.7	66	58.9	
30		147.4	136.1	123.8	109.6	97.3	85.8	76	65.5	58.2	49.8
32		135.1	128.5	117.2	105.8	94.3	83.4	74.7	64.6	57.2	49
34		121	121	111.5	102.1	91.2	81.3	72.9	63.8	56.6	48.3
36			113.4	105.8	97.3	88.3	79.1	71.1	62.4	55.5	47.6
38			105.8	100.2	92.6	85.1	76.1	69.3	61.2	54.5	46.8
40			98	94.5	86.8	80.6	74	67.5	60.3	53.4	45.9
44				82.1	79.9	74.7	68.9	63.4	59.4	51.1	44.4
48					72.2	68.1	63.5	59.3	58.2	48.7	42.4
52						65.5	62.2	58.5	55.3	55.5	46.8
56							56	53.6	51.5	51.5	44.6
60								49	47	46.5	42.2
64									43.7	41.5	40.0
68										38.0	37.0
72											33.5
76											32.5
80											28.6
84											29.1
84											25.5
84											22.0
Wind speed (m/s)	11.3					8.9					

LIFTING PERFORMANCE

Lifting capacity on SWDB boom (S-boom angle 85°)
Suspended ballast 0 – 250 t, D-radius 16 m,
rear counterweight 140 t, central counterweight 40 t

Length of S	48										
Length of W Radius	24	30	36	42	48	54	60	66	72	78	84
16	224.9	193.7									
18	215.5	187.1	161.6								
20	204.1	179.6	156.9	135.1							
22	191.8	171	150.3	131.4	114.3	100					
24	178.6	161.6	143.6	127.6	111.5	99.2	83.6				
26	166.3	154.0	138.5	123.0	108.7	97.8	83.2	73.2			
28	154	145.0	134.0	120.0	104.9	96.2	82.4	72	62.8		
30		134.0	128.0	116.0	102.0	94.6	81.5	70.9	61.6	54.0	46.5
32		123.0	121.0	110.5	99.0	92.8	80.2	69.3	60.6	53.4	45.9
34		115.0	113.5	104.8	96.5	90.2	78.9	67.6	60.0	52.5	45.3
36			106.0	98.6	93.0	86.9	77.5	65.8	59.2	51.7	44.6
38			98.5	93.3	89.5	82.7	76.0	63.8	58.0	50.7	44
40			91.0	88.3	85.5	79.2	74.5	62.1	56.3	48.7	43.1
44				81.0	80.0	73.5	70.5	59.3	54.8	47.3	42.2
48					73.0	67.5	65.5	56.5	53.0	45.7	40.8
52						63.0	61.5	59.5	53.0	51.0	43.5
56							55.5	53.5	50.0	49.0	41.7
60								48.0	46.0	45.5	40.0
64									44.0	42.0	41.0
68										37.5	36.5
72											33.0
76											32.5
80											30.0
84											28.5
84											24.0
84											25.5
84											21.5
Wind speed (m/s)	11.3					8.9					

Lifting capacity on SWDB boom (S-boom angle 85°)
Suspended ballast 0 – 250 t, D-radius 16 m,
rear counterweight 140 t, central counterweight 40 t

Length of S	54										
Length of W Radius	24	30	36	42	48	54	60	66	72	78	84
16	202.2										
18	192.8	168.2	145.5								
20	182.4	160.7	142.8	123.8							
22	171	153.1	139.1	120	105						
24	160.7	146	136.4	116.2	102.1	89.8	78.9				
26	149.3	140	132.7	111.5	99.2	87.5	77.1	68.1			
28	138.9	134	128.0	108.0	96.4	85.4	75.4	66.7	58.6		
30	130	127	122.0	105.0	93.4	82.4	73.7	65.7	57.3	50.8	
32		118	116.5	102.5	91.0	79.9	72.0	64.2	56.3	50	43.1
34			111	110.5	99.5	88.0	77.2	70.5	62.6	55.3	49.1
36			104	104.0	96.5	86.0	74.5	68.5	60.6	54.1	48
38				97.0	91.6	84.0	72.5	66.5	59	52.8	47.1
40				90.5	86.4	81.5	70.5	65.0	57	51.6	45.9
44					77.5	75.0	67.5	63.0	54.7	50.5	43.9
48						67.0	62.8	61.0	52.5	49.2	42.2
52							59.0	58.5	57.5	50.6	48.4
56								53.0	53.0	48.3	47.2
60									48.0	46.0	45.1
64										42.5	42.5
68											37.5
72											37.3
76											35.8
80											35.8
84											33.3
88											31.7
88											33.3
88											28.4
88											26.0
88											29.4
88											27.0
88											25.2
88											25.2
88											22.8
88											22.8
Wind speed (m/s)	11.3					8.9					

LIFTING PERFORMANCE

Lifting capacity on SWDB boom (S-boom angle 85°)
Suspended ballast 0 – 250 t, D-radius 16 m,
rear counterweight 140 t, central counterweight 40 t

Length of S	60											
Length of W Radius	24	30	36	42	48	54	60	66	72	78	84	
16	187.5											
18	180.6	157.6										
20	170.6	151.6	134.7	118.8								
22	160.7	144.7	129.7	114.8	101.7							
24	151.6	136.7	124.7	110.8	98.8	86.8						
26	140.7	129.7	118.8	106.8	95.8	84.8	75.1					
28	132.0	122.7	111.7	101.7	92.2	82.4	73.4	65.3	57.1			
30	128	117.0	106.7	97.7	88.6	79.8	71.3	63.8	56.3	49.8		
32		111.3	102.0	93.2	84.8	76.9	69.1	62.4	54.9	48.9	41	
34		104.3	98.5	89.6	81.1	74.1	66.9	60.8	53.8	47.9	40.5	
36		98.4	95.0	87.2	78.2	71	64.8	58.8	52.5	46.9	40	
38			91.0	85.0	75.5	68	62.2	57.1	51.1	45.8	39.6	
40			86.0	81.0	72.0	65.5	60	55.1	49.6	44.2	38.6	
44				75.0	68.5	63.0	57.9	53	47.7	42.4	37.5	
48				67.5	64.5	60.5	55.5	51.0	46.2	40.6	36.1	
52					58.5	56.5	53.5	49.2	44.6	39	34.5	
56						51.0	50.2	46.8	43.5	37.2	32.8	
60							45.0	44.6	42.4	35.8	31.2	
64							38.0	41.0	40.6	34.2	30.0	
68								35.5	37.4	32.8	28.9	
72									33.0	31.7	27.9	
76									29.0	30.0	26.7	
80										25.6	25.2	
84											22.4	
88											19.5	
Wind speed (m/s)	11.3			8.9								

Lifting capacity on SWDB boom (S-boom angle 85°)
Suspended ballast 0 – 250 t, D-radius 16 m,
rear counterweight 140 t, central counterweight 40 t

Length of S	66														
Length of W Radius	24	30	36	42	48	54	60	66	72	78	84				
16	163.1														
18	157.2	138.7													
20	149.4	132.8	119.2												
22	141.6	126.9	114.2	102.6	90.3										
24	132.8	121.1	109.4	98.6	88.1	78									
26	124	114.2	104.5	94.7	85.7	76.1	67.6								
28	116.2	107.4	98.6	91	82.3	73.8	66	58.7							
30	108.4	100.6	93.6	86.8	78.9	71.4	64.4	57.3	50.7	44.9					
32		94.5	89.9	83.1	75.4	69	62.1	56	49.6	44.1	37.5				
34		90.0	86.0	79.9	72.3	66.2	60.3	54.5	48.3	43.4	37				
36		86	82.5	76.5	69.6	63.3	57.9	52.5	47.1	42.3	36.5				
38			79.5	73.5	67.0	61.2	55.8	51	45.9	41.2	36				
40				77.0	70.0	64.5	58.7	53.8	49.2	44.4	40.1	35.3			
44					66.5	61.5	56.5	51.5	47.2	42.7	38.5	34			
48						61.5	58.5	54.0	49.0	45.7	40.8	36.5	32.5		
52							54.5	51.5	47.0	44.6	39.5	35.1	30.8		
56								48.0	44.5	43.0	38.0	33.4	29		
60									44.0	42.0	41.7	36.2	32.2	27.6	
64										38.0	39.8	35.2	31.0	26.4	
68											36.0	33.7	30.0	25.1	
72												31.0	31.0	29.0	24.2
76													28.0	27.8	23.4
80														25.9	22.2
84															20.3
88															18.5
Wind speed (m/s)	11.3			8.9											

LIFTING PERFORMANCE

Lifting capacity on SWDB boom (S-boom angle 85°)
Suspended ballast 0 – 250 t, D-radius 16 m,
rear counterweight 140 t, central counterweight 40 t

Length of S	72														
Length of W Radius	24	30	36	42	48	54	60	66	72	78	84				
18	139.7	124													
20	132.8	119.2	106.5												
22	126	114.2	102.6	91.8											
24	119.2	108.4	98.6	88.8	79.9	71.3									
26	111.3	102.6	94.1	85.5	77.2	69.5	61.7								
28	104.5	96.7	89	81.8	74.7	67.3	60.3	53.9							
30	97.7	90.4	84.3	77.8	71.4	64.9	58.6	52.5	46.5						
32		84.9	79.5	73.8	68.5	62.6	56.7	51.1	45.4	40.3	34.5				
34		79.8	75.9	70.4	65.1	60.3	54.8	49.8	44.2	39.7	34.2				
36		75.1	72.8	67.4	62.2	57.5	52.7	48	43.1	38.6	33.7				
38			69.5	65.0	59.8	55.1	50.8	46.5	41.7	37.6	33.1				
40				66.5	62.0	57.4	52.4	48.5	44.7	40.5	36.5	32.2			
44					58.0	54.5	49.6	45.8	42.2	38.7	34.8	30.6			
48						53.5	51.7	47.2	43.0	39.8	36.9	33	29.2		
52							49.2	45.0	40.6	37.6	35.1	31	27.7		
56								42.3	38.2	35.7	33.5	28.9	26.2		
60									38.0	35.8	33.5	32.0	26.3	24.8	
64										33.8	31.5	31.0	25.6	23.5	
68											29.0	29.7	24.7	22.6	
72												25.0	28.1	23.8	21.9
76													26.5	23.1	21.3
80														22.2	20.7
84															20.1
88															19.5
Wind speed (m/s)	11.3	8.9													

Lifting capacity on SWDB boom (S-boom angle 85°)
Suspended ballast 0 – 250 t, D-radius 16 m,
rear counterweight 140 t, central counterweight 40 t

Length of S	78														
Length of W Radius	24	30	36	42	48	54	60	66	72	78	84				
18	125														
20	121.1	108.4	96.6												
22	115.2	104.5	93.9	83.8											
24	110.4	99.6	90.3	81.6	73.3										
26	104.5	94.9	87.2	78.8	71.1	63.7									
28	98.6	90.5	83.1	76.1	68.7	62.1	55.1	49.6							
30	92.6	85.7	79	72.8	66.6	60.2	54.1	48.3	42.9						
32	82.0	80.5	75	69.3	63.7	58.1	52.4	47.5	42	37.2					
34		76.1	71.1	66.4	61.2	56.1	50.9	46.3	41.1	36.8	30.8				
36		71.8	67.2	63	58.8	54	49.2	44.6	40.1	35.8	30.4				
38		67.0	63.5	59.7	56	51.6	47.5	43.4	38.9	35.2	29.8				
40			60.1	56.5	53.1	49.6	45.7	42.1	37.9	34.2	29				
44				50.9	48.1	45.2	41.9	39.2	35.6	32.3	28.2				
48					45.7	43.5	41.2	38.4	35.9	33	30.3	27			
52						39.7	38.0	35.1	33	30.7	28.2	25.2			
56							34.9	32.5	31.1	28.8	26	23.5			
60								31.8	31.0	29.0	27.2	24.5	22.2		
64									30.0	27.7	25.7	22.9	20.8		
68										25.8	24.6	21.7	19.5		
72											23.5	23.2	20.8	18.6	
76												21.7	20.1	17.6	
80													19.2	17.2	
84														18.0	16.8
88															16.4
Wind speed (m/s)	8.9														

LIFTING PERFORMANCE

Lifting capacity on SWDB boom (S-boom angle 85°)
Suspended ballast 0 – 250 t, D-radius 16 m,
rear counterweight 140 t, central counterweight 40 t

Length of S	84										
Length of W	24	30	36	42	48	54	60	66	72	78	84
Radius	24	30	36	42	48	54	60	66	72	78	84
18	111.3										
20	107.4	96.6									
22	103.5	93.3	84.4	75.5							
24	98.6	89.5	81.4	73.4	66						
26	93.7	85.8	78.5	71.2	64.3	57.4					
28	88.6	81.5	75.1	68.9	62.4	56.3	50.2				
30	83.8	77.1	71.8	65.7	60.5	54.4	48.9	44	38.9		
32	79.1	72.9	68	62.9	57.9	52.7	47.7	42.7	38.2	33.7	
34		68.9	64.6	60.2	55.4	50.8	46.3	42	37.4	33.2	27.8
36		65.1	61	57.1	53.1	48.8	44.6	40.7	36.4	32.7	27.5
38		60.5	57.6	54.1	50.6	46.8	42.9	39.3	35.5	31.9	27.2
40			54.5	51.1	47.8	44.2	40.6	37.5	34.2	30.9	26.7
44			46.5	46	43.6	40.8	38	35.3	32.1	29.1	25.8
48				42.0	39.2	36.9	34.5	32.6	29.7	27.2	24.4
52					36	34.1	31.4	29.5	27.3	25.2	22.5
56						31.0	28.5	26.9	25	23.2	21
60						29.3	25.6	24.5	22.9	21.5	19.2
64							23.3	23.0	20.8	19.5	17.9
68								20.7	19.0	17.6	16.1
72								18.2	18.0	16.4	14.7
76									17.0	15.1	13.5
80										13.8	12.3
84										12.0	11.4
88											10.8
Wind speed (m/s)	8.9										

Tools configuration:

Each service engineer is provided with common tools and kit; standard tools are provided to more than 120 service stations as per levels; standard vehicle tools are provided for more than 300 service vehicles; and hydraulic system digital tester, hydraulic oil quality detector, material flaw detector and gas protection welding machine are provided for special emergency service vehicle to fasten fault diagnosing and solving speed.

Value added service:

All process, zero-distance tracking service for key projects;
Issue special working certificate for operator, provide training for operator all year round and establish operator club;
Provide regular equipment inspection;
Perform maintenance for major items;
Issue international agent training and qualification certification;
Hold series of activities like providing value added service, giving quick-wear part for free and giving discount.

Service network:

Zoomlion has set 27 branch companies, 120 service stations, 136 service stations, setting service stations as per 150km distance in developed areas taking service station as the center to strength the timeliness of service.

Zoomlion has set 100 overseas warehouses, storage of fittings more than 300million Yuan, management as supermarket. It has taken the lead in adopting computer network to perform management on the oversea warehouses to meet customers' need for fittings.

Zoomlion is the first mover in China to have adopted real-time control management system during service to enhance service process monitoring. The uniform service image can enable users to enjoy the standard service of Zoomlion wherever they are.

(Note: noted parts only refer to provincial capital cities)

