

# 130 ton capacity ZCC1300



websiteen.zoomlion.com

**ZOOMLION**

**Zoomlion Heavy Industry Science & Technology Co.,Ltd.**

Add: No.677, Lugu Road, Zoomlion Industrial Park, Changsha, Hunan, China, 410205

Copyright©2017 Zoomlion. All rights reserved. Reproduction and copying of any part of contents is not allowed for any purposes without Zoomlion's approval.



**ZOOMLION**

**4.0**  
PRODUCTS

Vision Creates Future

ZOOMLION

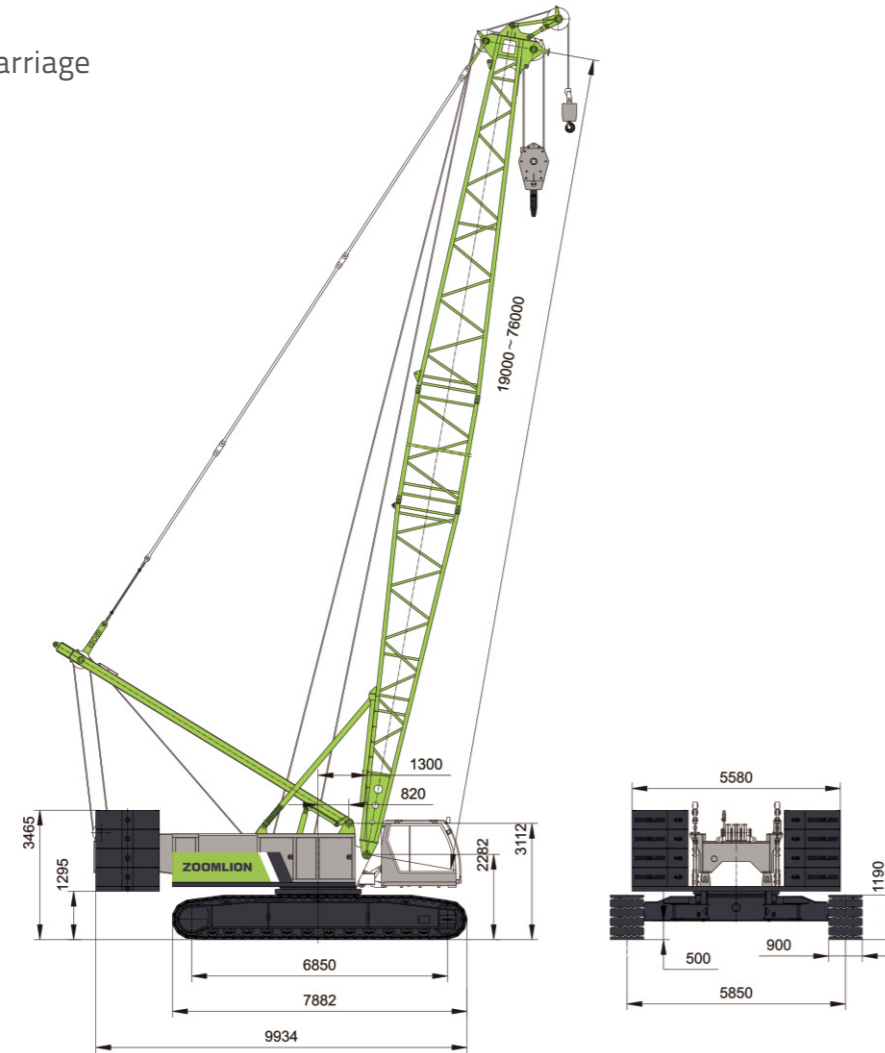
## CONTENTS

ZCC1300	DIMENSIONS	01
ZCC1300	TECHNICAL FEATURE	02
ZCC1300	BOOM COMBINATION	03
ZCC1300	TRANSPORT DIMENSIONS AND WEIGHTS	04-06
ZCC1300	TECHNICAL DESCRIPTION	07-08
ZCC1300	LIFTING PERFORMANCE	09-16



## DIMENSIONS

Basic machine with undercarriage



### Operating weight

The operating weight includes the basic machine with crawlers, 2 main winches including wire ropes (330m and 250m) and 19m main boom, consisting of Mast, boom foot (9m), boom head (10m), 47t rear counterweight, and 100t hook block.

Total weight-----approx. 112.8t

### Equipment

Main boom Max. Length -----76m  
 Fixed jib -----13-31m  
 Max. combination-----main boom 61m  
 -----fixed jib 31m  
 Max. lifting moment-----717.6t.m  
 Max. lifting capacity on fixed jib-----24t

## TECHNICAL FEATURE

### Excellent lifting performance

- The main boom lifting capacity is full beyond main competitors in this tonnage.
- The Max. lifting capacity of fixed jib is 24t, higher than the main competing models.

### Optimization of transportation, assembly and dismantling

- Equipped with self-assembly cylinder, making the self-assembly function more efficient.
- The max. transport weight of single part is 33.5t, and the max. width is 2.98m.
- All the pendants can be transported along with the boom section, the erecting time of whole crane will be less than 6 hours.

### New intelligent functions and improved safety control

- Added functions such as crane equipment management, statistical reports, fault alarms, equipment positioning and track playback on the mobile APP to improve equipment management and operational efficiency.
- Fully compliant with EU EN13000 safety control logic.

### New and comfortable operating cabin

- Full field of view, large operating space, full air conditioning air outlet, comfortable and cool indoor temperature.
- The operation switch buttons are arranged in a centralized manner and are easy to operate.
- Import of key components, the system is mature and reliable, and the component reliability is good.

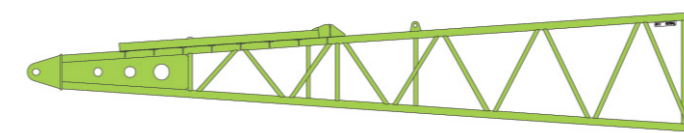
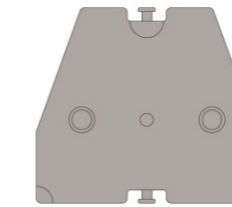
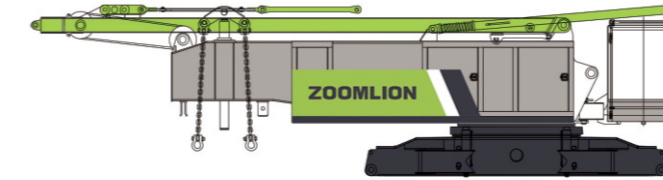
## BOOM COMBINATION

Main boom mode and tip boom mode can be switched with one key on computer.

Main boom mode (with fixed jib) and Fixed jib mode (with main hook) can be switched with one key on computer.



## TRANSPORT DIMENSIONS AND WEIGHTS



### Basic machine

Length	11485mm
Width	3000mm
Height	2980mm
Weight	33.5t

### Crawler carrier assy

Length	7882mm
Width	1190mm
Height	900mm
Weight	13.32t

### Counterweight base plate

Length	5580mm
Width	1700mm
Height	497mm
Weight	8.6t

### Counterweight plate

Length	1700mm
Width	1500mm
Height	500mm
Weight	4.8t

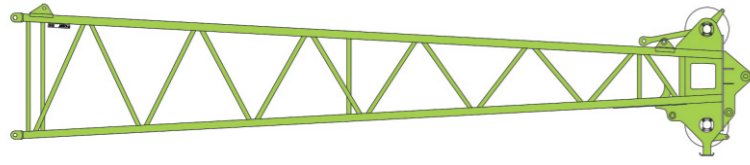
### Total weight

Length	4600mm
Width	880mm
Height	480mm
Weight	5t

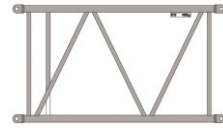
### Main boom pivot section (with a sign of G11 at the top right corner)

Length	9685mm
Width	2046mm
Height	1720mm
Weight	1.675t

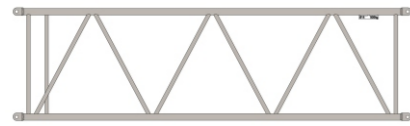
## TRANSPORT DIMENSIONS AND WEIGHTS



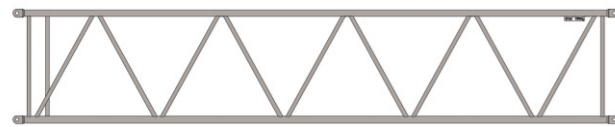
Main boom head (with a sign of G12 at the top left corner)	
Length	10175mm
Width	1920mm
Height	1845mm
Weight	2.06t



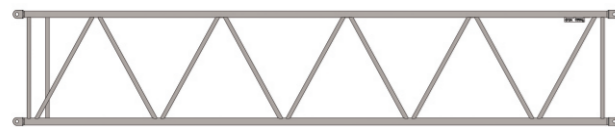
3m main boom intermediate section (with a sign of G13 at the top right corner)	
Length	3120mm
Width	1920mm
Height	1720mm
Weight	0.48t



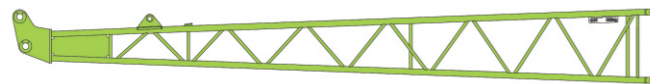
6m main boom intermediate section (with a sign of G14 at the top right corner)	
Length	6120mm
Width	1920mm
Height	1720mm
Weight	0.82t



9m main boom intermediate section A (with a sign of G15A at the top right corner)	
Length	9120mm
Width	1920mm
Height	1720mm
Weight	1.175t

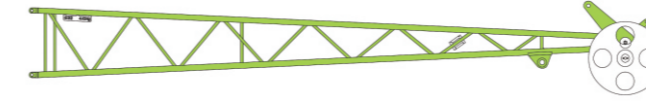


9m main boom intermediate section (with a sign of G15 at the top right corner)	
Length	9120mm
Width	1920mm
Height	1720mm
Weight	1.1t



Fixed jib pivot section (with a sign of G31 at the top right corner)	
Length	6665mm
Width	960mm
Height	760mm
Weight	0.345t

## TRANSPORT DIMENSIONS AND WEIGHTS



Fixed jib head (with a sign of G32 at the top left corner)	
Length	6930mm
Width	960mm
Height	760mm
Weight	0.445t



6m fixed jib intermediate section (with a sign of G33 at the top right corner)	
Length	6060mm
Width	960mm
Height	760mm
Weight	0.24t



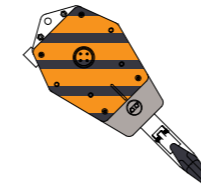
FA-frame	
Length	5280mm
Width	894mm
Height	674mm
Weight	0.5t



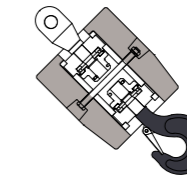
160t load hook	
Length	2182mm
Width	990mm
Height	803mm
Weight	2.38t



30t load hook	
Length	1631mm
Width	459mm
Height	773mm
Weight	0.76t



100t load hook	
Length	1974mm
Width	805mm
Height	800mm
Weight	1.94t



12t load hook	
Length	965mm
Width	430mm
Weight	0.46t



50t load hook	
Length	1964mm
Width	572mm
Height	800mm
Weight	1.36t

## TECHNICAL DESCRIPTION



### Engine

#### A:

Engine type---- CUMMINS QSL9-C280.  
 Rated power----209 kw/2000 rpm.  
 Maximum output torque----1424Nm/1500rpm.  
 Fuel tank-----700L.  
 Exhaust emission complies with standard U.S.Tier 3, selective U.S.Tier 4.

#### B:

Engine type----Weichai WP10G336E344.  
 Rated power----209 kw/2000 rpm.  
 Maximum output torque----1550Nm/1400rpm.  
 Fuel tank-----700L.  
 Exhaust emission complies with off-road emission (GB 20891-2014).



### Hydraulic system

Main hydraulic elements such as pump, motor and main control valves, are imported from Germany. Main hydraulic pump: electro-hydraulic proportional dual piston variable pump. Slewing pump: electro-hydraulic proportional piston pump. Auxiliary pump: gear pump. Main control valve: pilot-operated electro-hydraulic control valve. Control way for main circuit: main variable pump + main directional control valve, controlled by two control levers. Slewing control circuit: closed oil circuit. Hydraulic oil tank capacity: 660 L. Oil cooler for hydraulic system: aluminum cooler, with the cooling fan driven by a motor.



### Hoisting winch

The crane is fitted with two hoisting winches: hoisting winch 1 and hoisting winch 2. Each of them is driven by hydraulic motor with a planet reducer which is equipped with normally closed disc brake. High hoisting speed and low hoisting speed are available for hoisting winches. The winding drum has LEBUS groove to prevent wire rope from being twisted.

#### Main winch

Line pull-----Max.127KN  
 Rope diameter-----26mm  
 Rope speed -----0-117m/min  
 Rope length-----330m

#### Aux.winch

Line pull-----Max.127KN  
 Rope diameter-----26mm  
 Rope speed-----0-110m/min  
 Rope length-----250m



### Boom winches

Boom winch consists of hoisting reducer, motor, normally closed disc brake, rope, over-discharge device, etc. High hoisting speed and low hoisting speed are available for hoisting winches. The winding drum has LEBUS groove to prevent wire rope from being twisted.

#### Boom winch

Line pull-----Max.101KN  
 Rope diameter-----22mm  
 Rope speed -----0-56m/min  
 Rope length-----250m



### Swing

The slewing mechanism consists of built-in axial piston variable displacement motor, gear reducer, normally closed slewing brake and pinion gear as well as slewing ring. The superstructure can realize 360° continuous rotation via slewing ring which is driven by the pinion gear.

Slewing speed-----0- 2.2 rpm.

## TECHNICAL DESCRIPTION



### Main boom

Main boom length: 19m -76m  
 Main boom intermediate section: 3m, 6m, 9m

Main boom length (m)	Number of main boom intermediate sections			
	3m	6m	9mA	9m
19	0	0	0	0
22	1	0	0	0
25	2	0	0	0
28	1	1	0	0
31	2	1	0	0
34	1	2	0	0
37	1	1	1	0
40	2	1	1	0
43	1	2	1	0
46	1	1	2	0
49	2	1	2	0
52	1	2	2	0
55	1	1	2	1
58	2	1	2	1
61	1	2	2	1
64	1	1	2	2
67	2	1	2	2
70	1	2	2	2
73	1	1	2	3
76	2	1	2	3



### Fixed jib

Fixed jib length: 13m - 31m  
 Fixed jib intermediate section: 6m  
 Fixed jib angle: 10°, 30°

Fixed jib length (m)	Number of fixed jib intermediate sections
	6m
13	0
19	1
25	2
31	3

# LIFTING PERFORMANCE

## Main boom configuration

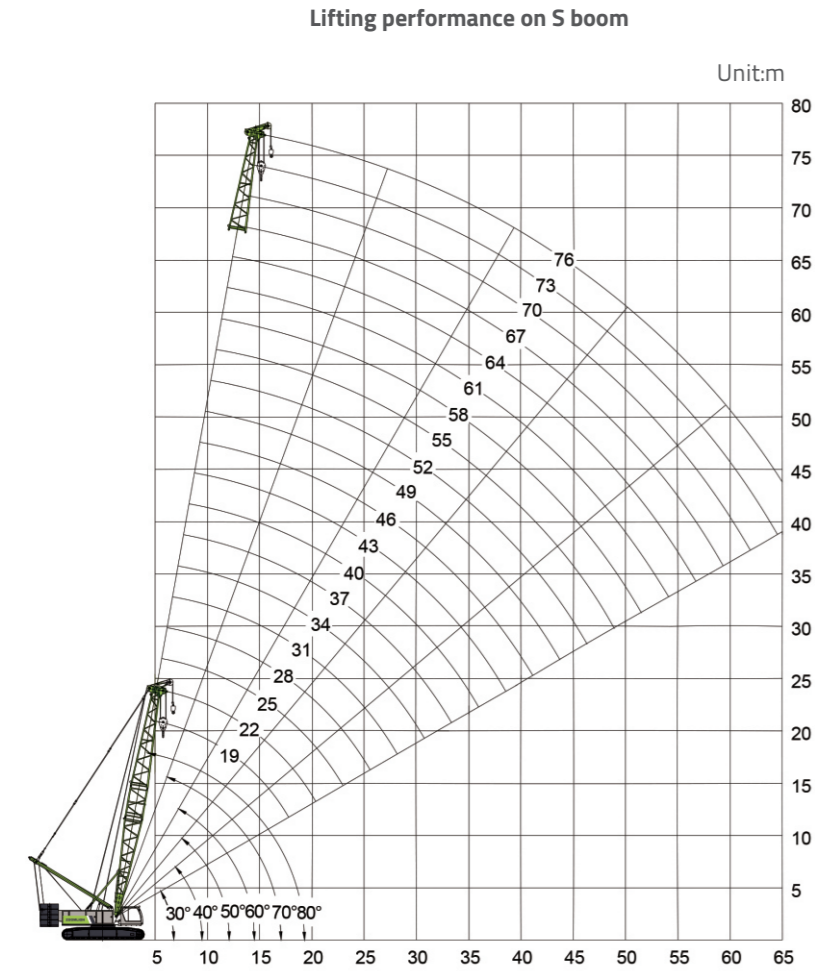


Table of lifting performance on S boom

Rear cwt.:47000kg      75%      360°      (UNIT: KG)

MAIN BOOM LENGTH (M)											
Radius (m)	19	22	25	28	31	34	37	40	43	46	Radius (m)
5	130										5
6	119.6	118	110.7								6
7	100.6	100.1	97.4	95	88						7
8	86.3	85	84.6	84.5	80.8	79.4	71.3				8
9	75.4	74.4	73.3	72.2	71	69.9	68.7	63.1	56		9
10	64.3	64.3	64.3	63.4	61.7	61.4	60.5	59.5	55.5	54.8	10
12	52.4	51.9	51.3	50.7	49.9	49.1	48.6	47.9	47.3	46.7	12
14	42.3	42.2	42.1	42	41.5	41	40.5	39.3	39.2	39	14
16	35.4	35.3	35.2	35.1	34.9	34.5	34	33.6	32.6	32.4	16
18	30.1	30.1	30.1	30.1	29.8	29.6	29.2	29	29	28.3	18
20		26.5	26.1	26.1	25.9	25.7	25.4	25.2	25	25	20
22			23.2	23	22.8	22.6	22.4	22.2	22	21.8	22
24				20.2	20.1	20	19.8	19.6	19.5	19.3	24
26				18.4	18.2	18	17.8	17.5	17.4	17.2	26
28					16.4	16.2	16	15.8	15.7	15.5	28
30						14.8	14.5	14.3	14.2	14	30
32							13.2	13	12.8	12.7	32
34								11.8	11.7	11.5	34
36								10.9	10.7	10.5	36
38									9.5	9.4	38
40										8.7	40

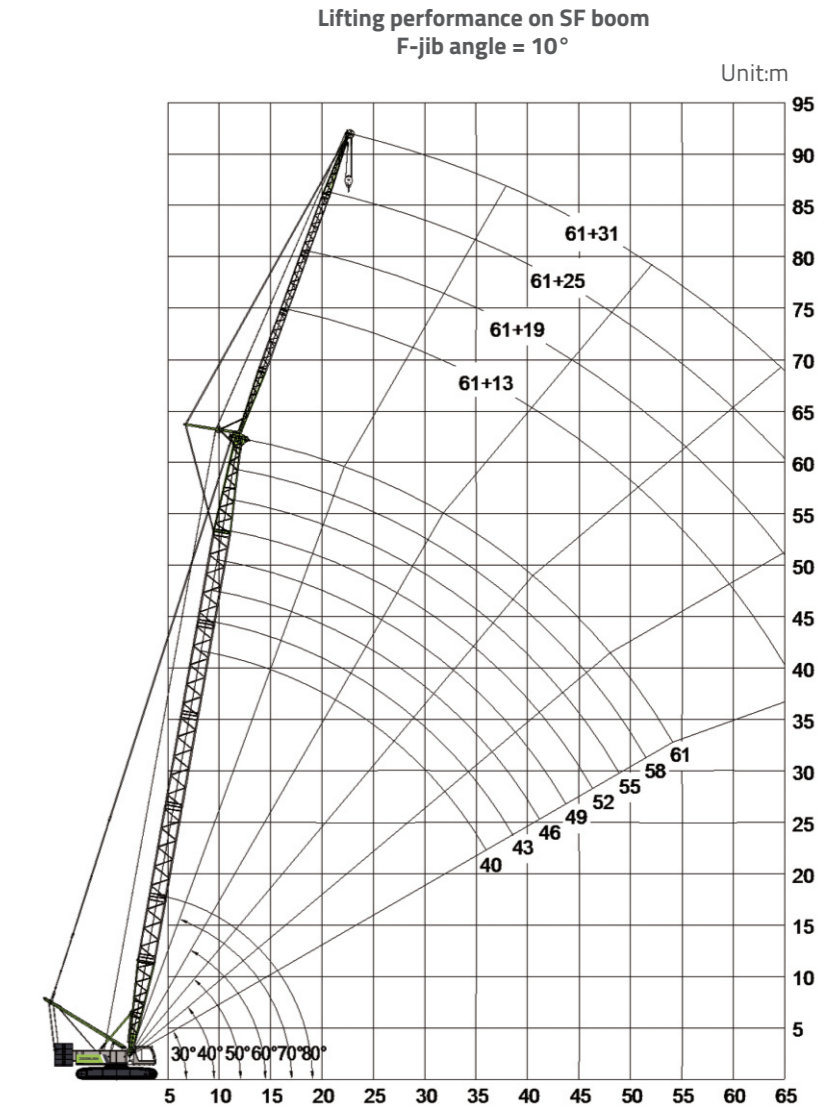
- Caution:
1. When tip boom is used, the lifting capacity on tip boom is the same as that on main boom within the same radius, but its max. lifting capacity should not exceed 13t.
  2. Tip boom cannot work together with main boom when tip boom is fitted on main boom.
  3. The lifting capacity on main boom is always the same whether the tip boom is used or not.

# LIFTING PERFORMANCE

Table of lifting performance on S boom

Rear cwt.:47000kg      75%      360°      (UNIT: KG)

MAIN BOOM LENGTH (M)											
Radius (m)	49	52	55	58	61	64	67	70	73	76	Radius (m)
10	48.9	44									10
12	46.3	43.7	42.7	39.5	33.4	29.2					12
14	38.3	37.6	37.6	35.7	32.7	28.7	27.1	24.1	21	19.2	14
16	32.2	31.9	31.8	31.2	30.8	28	26.7	23.9	20	18.2	16
18	27.4	27.2	27.2	26.8	26.5	26.1	25	21.9	18.9	17	18
20	24.6	24.3	23.4	23.2	23.1	22.6	22.5	20.8	18.2	16.3	20
22	21.6	21.5	20.5	20.3	20.1	19.9	19.7	19.6	17.6	15.8	22
24	19.1	18.8	18.4	17.9	17.7	17.6	17.4	17.2	16.7	14.7	24
26	17	16.8	16.4	16.2	15.7	15.5	15.5	15.3	15	14.1	26
28	15.3	15.1	14.7	14.2	14	13.9	13.8	13.6	13.5	12.9	28
30	13.7	13.5	12.9	12.8	12.6	12.4	12.4	12.2	12	11.6	30
32	12.4	12.3	11.7	11.6	11.4	11.2	11.1	11	10.8	10.5	32
34	11.3	11.1	10.6	10.5	10.3	10.1	10	9.9	9.7	9.5	34
36	10	9.9	9.7	9.5	9.3	9.1	9.1	8.9	8.8	8.6	36
38	9.3	9.2	8.9	8.7	8.5	8.4	8.3	8.1	7.9	7.7	38
40	8.4	8.2	8.2	7.9	7.8	7.6	7.5	7.3	7.2	7	40
42	7.7	7.5	7.4	7.3	7.1	6.9	6.9	6.6	6.5	6.3	42
44	7.1	6.9	6.9	6.6	6.5	6.3	6.2	6	5.9	5.7	44
46		6.3	6.3	6.1	6	5.8	5.7	5.5	5.4	5.1	46
48			5.8	5.6	5.5	5.2	5.2	5	4.8	4.6	48
50				5.1	5	4.8	4.7	4.5	4.4	4.2	50
52					4.6	4.4	4.3	4.1	3.9	3.7	52
54						4.2	3.9	3.9	3.7	3.5	54
56							3.6	3.5	3.3	3.2	56
58								3.2	3	2.9	58
60									2.7	2.5	60
62										2.2	62



# LIFTING PERFORMANCE

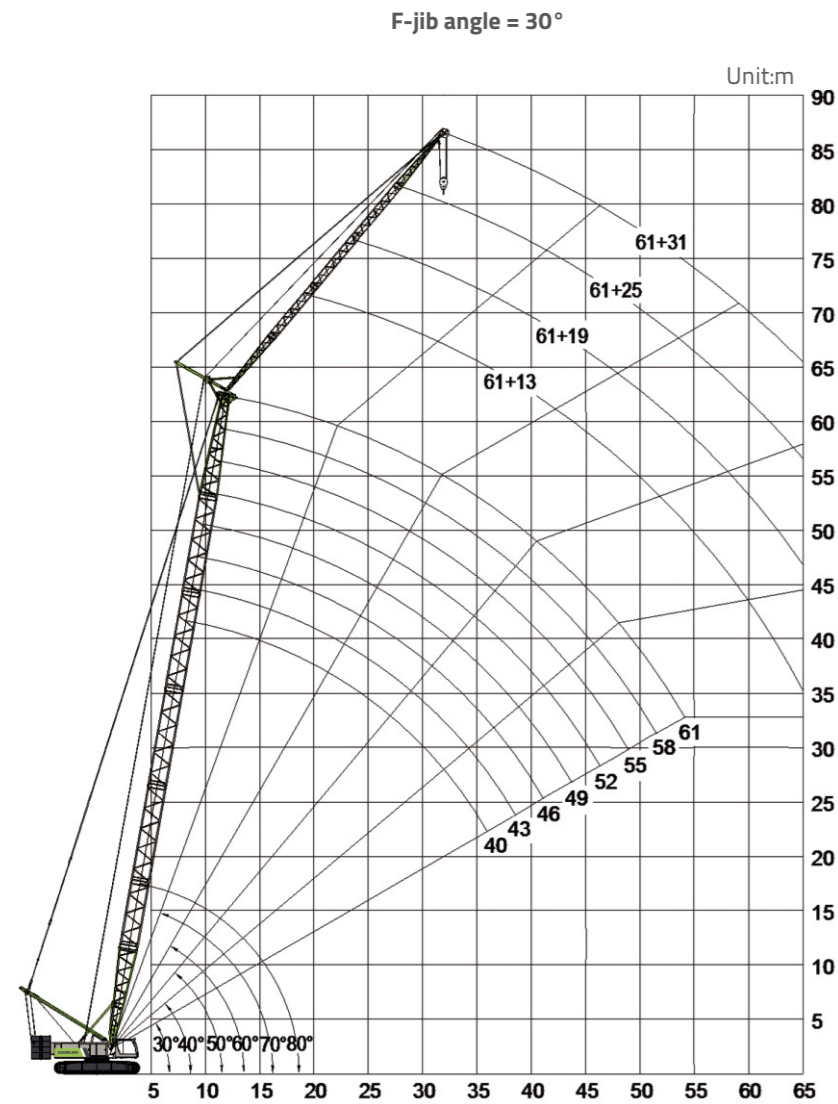


Table of lifting performance of SF boom

Rear ctwt.:47000kg      75%      360°      (UNIT: KG)

Main boom length (m)	40								Main boom length (m)
Fixed jib length (m)	FIXED JIB ANGLE (°)								Fixed jib length (m)
Radius (m)	FIXED JIB ANGLE (°)								Radius (m)
	10	30	10	30	10	30	10	30	
14	24								14
16	23		15						16
18	21.9	18.6	14.5		9.3				18
20	21.1	18.1	14		8.9		5.7		20
22	20.2	17.7	13.5	11.3	8.5		5.4		22
24	19	17.3	13	11	8.1		5.2		24
26	17.8	16.8	12.6	10.7	7.7	6.1	4.9		26
28	16.3	16	12.1	10.5	7.4	5.9	4.7		28
30	14.6	15.1	11.7	10.2	7	5.7	4.4	3.2	30
32	13.5	13.7	11.3	9.9	6.7	5.5	4.2	3.1	32
34	12.3	12.7	10.9	9.7	6.4	5.3	4	3	34
36	11.3	11.5	10.5	9.5	6.2	5.2	3.8	2.8	36
38	10.4	10.4	10.2	9.3	6	5	3.6	2.7	38
40	9.5	9.8	9.6	9.1	5.7	4.9	3.4	2.6	40
42	8.7	9	9	8.8	5.5	4.8	3.2	2.5	42
44	8.2	8.2	8.4	8.2	5.4	4.6	3.1	2.4	44
46	7.6	7.6	7.8	7.6	5.2	4.5	2.9	2.3	46
48	7	7.1	7.3	7.3	5	4.4	2.8	2.2	48
50			6.8	6.8	4.8	4.3	2.7	2.1	50
52			6.2	6.4	4.7	4.3	2.5	2	52
54			5.8	5.9	4.5	4.2	2.4	2	54

# LIFTING PERFORMANCE

Table of lifting performance of SF boom (continued)

Rear ctwt.:47000kg      75%      360°      (UNIT: KG)

Main boom length (m)	43								Main boom length (m)
Fixed jib length (m)	FIXED JIB ANGLE (°)								Fixed jib length (m)
Radius (m)	FIXED JIB ANGLE (°)								Radius (m)
	10	30	10	30	10	30	10	30	
14	23.5								14
16	22.7		15.1						16
18	22	18.6	14.7		9.4				18
20	21.2	18.2	14.1		9		5.8		20
22	20.2	17.8	13.6	11.4	8.6		5.5		22
24	19.1	17.5	13.2	11.1	8.2		5.2		24
26	17.7	16.9	12.8	10.8	7.9	6.1	5		26
28	16	16.1	12.3	10.5	7.5	5.9	4.8		28
30	14.6	15.1	11.9	10.3	7.2	5.7	4.5	3.3	30
32	13.2	13.7	11.5	10.1	6.9	5.6	4.3	3.1	32
34	12.1	12.3	11.1	9.8	6.6	5.4	4.1	3	34
36	10.9	11.5	10.8	9.6	6.4	5.2	3.9	2.9	36
38	10.1	10.4	10.2	9.4	6.1	5.1	3.7	2.8	38
40	9.3	9.5	9.5	9.2	5.9	5	3.5	2.6	40
42	8.7	8.9	8.9	8.8	5.7	4.8	3.4	2.5	42
44	8	8.2	8.2	8.2	5.5	4.7	3.2	2.4	44
46	7.3	7.5	7.6	7.8	5.3	4.6	3.1	2.3	46
48	6.8	7	7.1	7.3	5.2	4.5	2.9	2.3	48
50	6.2	6.4	6.4	6.8	5	4.4	2.8	2.2	50
52			6.1	6.2	4.8	4.3	2.6	2.1	52
54			5.6	5.8	4.7	4.3	2.5	2	54
56			5.2	5.4	4.6	4.2	2.4	2	56

Table of lifting performance of SF boom (continued)

Rear ctwt.:47000kg      75%      360°      (UNIT: KG)

Main boom length (m)	46								Main boom length (m)
Fixed jib length (m)	FIXED JIB ANGLE (°)								Fixed jib length (m)
Radius (m)	FIXED JIB ANGLE (°)								Radius (m)
	10	30	10	30	10	30	10	30	
16	22.9		15.2						16
18	22.2	18.7	14.7		9.5				18
20	21.5	18.2	14.3		9.1		5.9		20
22	20.5	17.9	13.8	11.5	8.7		5.6		22
24	19.2	17.6	13.3	11.2	8.4		5.3		24
26	17.7	17	12.9	10.9	8	6.2	5.1		26
28	16	16	12.5	10.6	7.7	6	4.9		28
30	14.4	14.9	12.1	10.4	7.3	5.8	4.6	3.3	30
32	13.2	13.5	11.7	10.2	7	5.6	4.4	3.2	32
34	11.8	12.3	11.3	10	6.7	5.5	4.2	3.1	34
36	10.9	11.3	10.8	9.7	6.5	5.3	4	2.9	36
38	10.1	10.4	10.2	9.5	6.3	5.2	3.8	2.8	38
40	9.2	9.5	9.5	9.3	6.1	5	3.6	2.7	40
42	8.5	8.7	8.7	8.8	5.9	4.9	3.5	2.6	42
44	7.8	8	8	8.2	5.6	4.8	3.3	2.5	44
46	7.3	7.3	7.5	7.8	5.5	4.7	3.2	2.4	46
48	6.8	6.8	7	7.1	5.3	4.6	3	2.3	48
50	6.2	6.2	6.4	6.6	5.1	4.5	2.9	2.2	50
52	5.8	5.8	5.9	6	5	4.4	2.8	2.1	52
54		5.4	5.6	5.6	4.8	4.3	2.6	2.1	54
56			5	5.2	4.7	4.3	2.5	2	56



## LIFTING PERFORMANCE

Table of lifting performance of SF boom (continued)									
Rear ctwt.:47000kg 75% 360° (UNIT: KG)									
Main boom length (m)	49								Main boom length (m)
Fixed jib length (m)	13		19		25		31		Fixed jib length (m)
Radius (m)	FIXED JIB ANGLE (°)								Radius (m)
	10	30	10	30	10	30	10	30	
16	22.9								16
18	22.2		14.8						18
20	21.6	18.2	14.3		9.2				20
22	20.6	17.9	13.9		8.8		5.6		22
24	19.2	17.6	13.5	11.2	8.4		5.4		24
26	17.7	17.1	13.1	10.9	8.1	6.2	5.2		26
28	15.8	16.1	12.7	10.7	7.8	6	4.9		28
30	14.1	14.6	12.3	10.5	7.5	5.9	4.7	3.3	30
32	13	13.2	11.9	10.3	7.2	5.7	4.5	3.2	32
34	11.8	12.1	11.3	10	6.9	5.5	4.3	3.1	34
36	10.7	10.9	10.9	9.8	6.6	5.4	4.1	3	36
38	9.9	10.1	10.1	9.6	6.4	5.2	3.9	2.9	38
40	9	9.3	9.3	9.3	6.2	5.1	3.8	2.7	40
42	8.4	8.5	8.5	8.8	6	5	3.6	2.6	42
44	7.6	7.8	7.8	8.2	5.8	4.9	3.4	2.5	44
46	7.1	7.3	7.3	7.6	5.6	4.8	3.3	2.5	46
48	6.4	6.6	6.8	7	5.4	4.6	3.1	2.4	48
50	5.9	6.1	6.2	6.4	5.3	4.6	3	2.3	50
52	5.6	5.6	5.8	5.8	5.1	4.5	2.9	2.2	52
54	5	5.2	5.4	5.4	5	4.4	2.7	2.1	54
56	4.7	4.7	4.8	5	4.8	4.3	2.6	2.1	56
58			4.5	4.7	4.7	4.2	2.5	2	58

Table of lifting performance of SF boom (continued)									
Rear ctwt.:47000kg 75% 360° (UNIT: KG)									
Main boom length (m)	52								Main boom length (m)
Fixed jib length (m)	13		19		25		31		Fixed jib length (m)
Radius (m)	FIXED JIB ANGLE (°)								Radius (m)
	10	30	10	30	10	30	10	30	
18	22.2		14.8						18
20	21.7	18.3	14.4		9.2				20
22	20.6	18	14		8.9		5.7		22
24	19.1	17.7	13.6	11.3	8.6		5.4		24
26	17.4	17.1	13.2	11	8.2		5.2		26
28	15.5	16	12.8	10.8	7.9	6.1	5		28
30	14.1	14.6	12.5	10.5	7.6	5.9	4.8		30
32	12.7	13.2	12	10.3	7.3	5.7	4.6	3.3	32
34	11.5	12.1	11.3	10.1	7	5.6	4.4	3.1	34
36	10.6	10.9	10.8	9.9	6.7	5.4	4.2	3	36
38	9.5	10.1	9.9	9.6	6.5	5.3	4	2.9	38
40	8.9	9.2	9	9.3	6.3	5.2	3.8	2.8	40
42	8.2	8.5	8.4	8.7	6.1	5	3.7	2.7	42
44	7.5	7.6	7.6	8.2	5.9	4.9	3.5	2.6	44
46	6.8	7.1	7.1	7.5	5.7	4.8	3.4	2.5	46
48	6.2	6.4	6.4	6.8	5.6	4.7	3.2	2.4	48
50	5.9	5.9	6.1	6.2	5.4	4.6	3.1	2.3	50
52	5.4	5.6	5.6	5.8	5.2	4.5	3	2.3	52
54	4.8	5	5	5.3	5.1	4.5	2.9	2.2	54
56	4.5	4.6	4.7	5	4.8	4.4	2.7	2.1	56
58	4.2	4.2	4.4	4.5	4.5	4.1	2.6	2.1	58
60			4	4.2	4.2	3.9	2.5	2	60

## LIFTING PERFORMANCE

Table of lifting performance of SF boom (continued)									
Rear ctwt.:47000kg 75% 360° (UNIT: KG)									
Main boom length (m)	55								Main boom length (m)
Fixed jib length (m)	13		19		25		31		Fixed jib length (m)
Radius (m)	FIXED JIB ANGLE (°)								Radius (m)
	10	30	10	30	10	30	10	30	
18	22.2		14.8						18
20	21.5	18.2	14.4		9.3				20
22	20.4	18	14.1		8.9		5.7		22
24	18.9	17.6	13.6	11.3	8.6		5.5		24
26	16.8	16.8	13.3	11.1	8.3		5.3		26
28	15.5	16	12.9	10.9	8	6.1	5.1		28
30	13.7	14.4	12.5	10.6	7.7	5.9	4.9		30
32	12.7	13.2	11.9	10.4	7.4	5.8	4.7	3.3	32
34	11.5	11.8	11.3	10.2	7.1	5.6	4.5	3.2	34
36	10.4	10.9	10.6	10	6.9	5.5	4.3	3.1	36
38	9.5	9.9	9.9	9.7	6.6	5.4	4.1	2.9	38
40	8.7	9	9	9.4	6.4	5.2	4	2.8	40
42	8	8.4	8.2	8.7	6.2	5.1	3.8	2.7	42
44	7.3	7.6	7.6	8	6.1	5	3.6	2.6	44
46	6.8	7	7	7.3	5.9	4.9	3.5	2.6	46
48	6.2	6.4	6.4	6.8	5.7	4.8	3.3	2.5	48
50	5.8	5.9	5.9	6.2	5.5	4.7	3.2	2.4	50
52	5.2	5.4	5.4	5.6	5.4	4.6	3.1	2.3	52
54	4.8	5	5	5.2	5.2	4.5	3	2.2	54
56	4.4	4.5	4.6	4.8	4.8	4.4	2.8	2.2	56
58	4	4.2	4.2	4.5	4.4	4.1	2.7	2.1	58
60	3.6	3.8	3.8	4.1	4.1	3.8	2.6	2	60
62		3.4	3.6	3.6	3.8	3.7	2.5	2	62

Table of lifting performance of SF boom (continued)									
Rear ctwt.:47000kg 75% 360° (UNIT: KG)									
Main boom length (m)	58								Main boom length (m)
Fixed jib length (m)	13		19		25		31		Fixed jib length (m)
Radius (m)	FIXED JIB ANGLE (°)								Radius (m)
	10	30	10	30	10	30	10	30	
18	22.1		14.8						18
20	21.6	18.2	14.4						20
22	20.4	17.8	14.1		9				22
24	18.6	17.3	13.7	11.3	8.7		5.5		24
26	16.6	16.4	13.3	11.1	8.4		5.3		26
28	15.1	15.5	13	10.9	8.1	6.1	5.1		28
30	13.7	14.1	12.5	10.7	7.8	6	4.9		30
32	12.3	13	12	10.5	7.5	5.8	4.7	3.3	32
34	11.3	11.8	11.1	10.3	7.3	5.7	4.6	3.2	34
36	10.3	10.7	10.4	10.1	7	5.5	4.4	3.1	36
38	9.3	9.8	9.5	9.7	6.7	5.4	4.2	3	38
40	8.5	9	8.7	9.3	6.6	5.3	4	2.9	40
42	7.8	8.2	8	8.5	6.4	5.2	3.9	2.8	42
44	7.1	7.5	7.3	7.8	6.2	5.1	3.7	2.7	44
46	6.6	6.8	6.8	7.2	6	5	3.6	2.6	46
48	5.9	6.2	6.2	6.6	5.8	4.8	3.4	2.5	48
50	5.6	5.8	5.8	6.1	5.7	4.8	3.3	2.4	50
52	5	5.2	5.2	5.6	5.4	4.7	3.2	2.3	52
54	4.6	4.8	4.8	5	5	4.6	3	2.3	54
56	4.2	4.4	4.4	4.7	4.5	4.3	2.9	2.2	56
58	3.8	4	4	4.3	4.2	4	2.8	2.1	58
60	3.4	3.6	3.6	4	3.8	3.7	2.7	2.1	60
62	3.1	3.3	3.4	3.6	3.6	3.6	2.6	2	62
64	2.9	3	3.1	3.2	3.3	3.4	2.5	2	64

## LIFTING PERFORMANCE

Table of lifting performance of SF boom (continued)										
Rear cwt.:47000kg		75%				360°				(UNIT: KG)
Main boom length (m)	61								Main boom length (m)	
Fixed jib length (m)	13		19		25		31		Fixed jib length (m)	
Radius (m)	FIXED JIB ANGLE (°)								Radius (m)	
	10	30	10	30	10	30	10	30		
18	21.9								18	
20	21.5		14.4						20	
22	20.5	17.7	14.1		9				22	
24	18.2	17.1	13.7		8.7		5.6		24	
26	16.3	16.3	13.4	11.1	8.4		5.4		26	
28	14.6	15.5	13.1	10.9	8.2		5.2		28	
30	13.2	13.7	12.6	10.7	7.9	6	5		30	
32	12.1	12.7	12	10.5	7.6	5.9	4.8	3.3	32	
34	10.9	11.5	11.1	10.3	7.4	5.7	4.6	3.2	34	
36	10.1	10.4	10.3	10.1	7.1	5.6	4.4	3.1	36	
38	9.2	9.5	9.3	9.8	6.8	5.5	4.3	3	38	
40	8.5	8.7	8.7	9.2	6.6	5.4	4.1	2.9	40	
42	7.6	8	7.8	8.5	6.5	5.2	4	2.8	42	
44	7.1	7.3	7.3	7.6	6.3	5.1	3.8	2.7	44	
46	6.4	6.8	6.6	7.1	6.1	5	3.6	2.6	46	
48	5.9	6.1	6.1	6.4	5.9	4.9	3.5	2.6	48	
50	5.4	5.6	5.6	5.9	5.6	4.8	3.4	2.5	50	
52	4.8	5	5	5.4	5.2	4.7	3.3	2.4	52	
54	4.5	4.7	4.7	5	4.8	4.6	3.1	2.3	54	
56	4	4.2	4.2	4.5	4.5	4.3	3	2.3	56	
58	3.6	3.8	3.8	4.2	4	3.9	2.9	2.2	58	
60	3.3	3.4	3.6	3.8	3.6	3.7	2.8	2.1	60	
62	3	3.1	3.2	3.4	3.4	3.6	2.7	2.1	62	
64	2.8	2.8	3	3.1	3.1	3.4	2.6	2	64	
66	2.5	2.5	2.6	2.8	2.8	3.1	2.5	2	66	

## LIFTING PERFORMANCE

Table of lifting performance of SF boom (continued)									
Rear cwt.:47000kg		75%				360°			(UNIT: KG)
Main boom length (m)	64							Main boom length (m)	
Fixed jib length (m)	13		19		25			Fixed jib length (m)	
Radius (m)	FIXED JIB ANGLE (°)							Radius (m)	
	10	30	10	30	10	30			
18	21.7							18	
20	21.3		14.3					20	
22	20	17.5	14.1		9			22	
24	17.7	16.9	13.7		8.8			24	
26	16	16.1	13.4	11.1	8.5			26	
28	14.6	15.1	13.1	10.9	8.2			28	
30	13.2	13.7	12.7	10.7	8	6		30	
32	11.8	12.3	11.8	10.5	7.7	5.9		32	
34	10.7	11.3	10.9	10.4	7.5	5.8		34	
36	9.9	10.4	10.1	10.2	7.2	5.6		36	
38	9	9.5	9.2	9.9	7	5.5		38	
40	8.2	8.7	8.5	9	6.7	5.4		40	
42	7.6	7.8	7.8	8.4	6.6	5.3		42	
44	6.8	7.3	7.1	7.6	6.4	5.2		44	
46	6.2	6.6	6.4	7	6.2	5.1		46	
48	5.8	5.9	5.9	6.4	6.1	5		48	
50	5.2	5.4	5.4	5.9	5.6	4.9		50	
52	4.8	5	5	5.4	5	4.8		52	
54	4.4	4.5	4.5	4.8	4.7	4.7		54	
56	4	4.2	4.2	4.5	4.4	4.5		56	
58	3.6	3.6	3.8	4	4	3.9		58	
60	3.2	3.3	3.4	3.6	3.6	3.7		60	
62	2.9	3	3.1	3.3	3.3	3.5		62	
64	2.6	2.7	2.8	3	3	3.3		64	
66	2.3	2.5	2.5	2.7	2.7	3		66	
68	2.1	2.1	2.3	2.5	2.5	2.7		68	