

ALL TERRAIN CRANE ZAT2000



ZOOMLION

Zoomlion Heavy Industry Science & Technology Co.,Ltd.

Add: No.677, Lugu Road, Zoomlion Industrial Park, Changsha, Hunan, China, 410205
Copyright©2017 Zoomlion. All rights reserved. Reproduction and copying of any part of contents is not allowed for any purposes without Zoomlion's approval.
Production Date: 20180615



website.en.zoomlion.com

ZOOMLION

Vision Creates Future

CONTENTS

| | | |
|----------------|---|----------------|
| ZAT2000 | Highlights | 01 / 02 |
| ZAT2000 | Main Technical Parameters | 03 |
| ZAT2000 | Overall Dimensions in Driving Condition / Lifting Height Chart | 04 |
| ZAT2000 | Lifting Capacity Tables | 07 / 08 |





103
m

Max. Lifting Height
(Main boom + Jib)

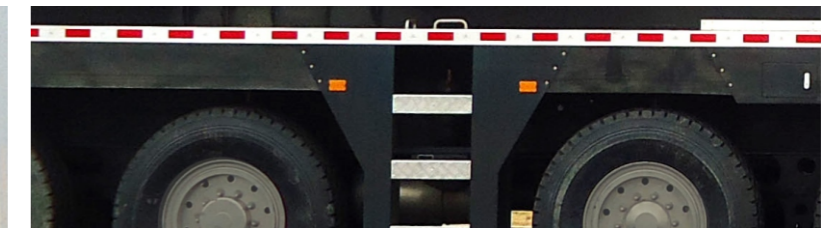
72
T

Counterweight
Total weight



ZAT2000 Highlights

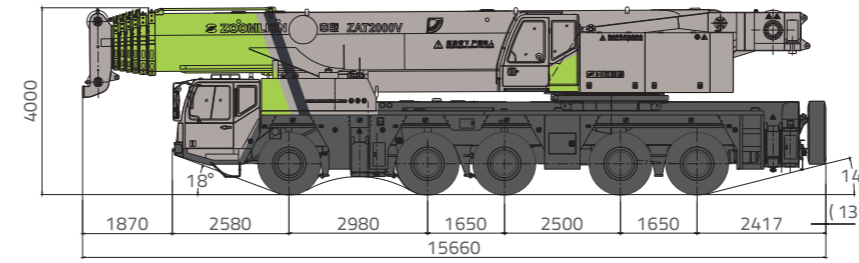
- 7 section 72m main boom, total 36m jibs (including optional 8m extension), max. lifting height can reach up to 103m.
- Elliptic shaped main boom with 1100Mpa high tensile imported plate, offers outstanding stability and strength.
- Advanced multi-steering modes and market-proven pneumatic-hydraulic suspension system enables suitable and stable driving.
- Golden driving chain with WHEICHAJ engine, FAST transmission and ZOOMLION axle, makes it max. cost efficient.



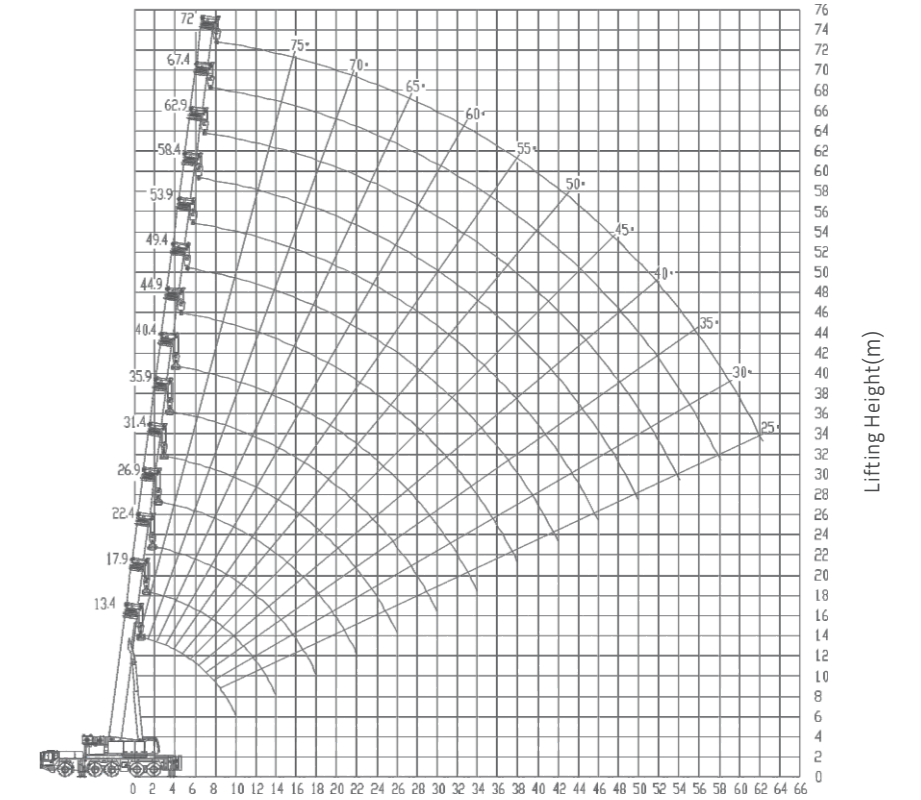
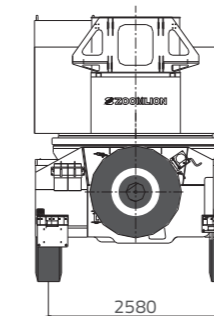
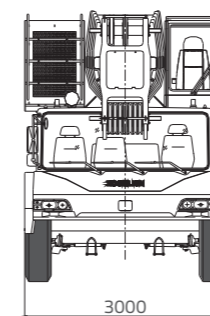
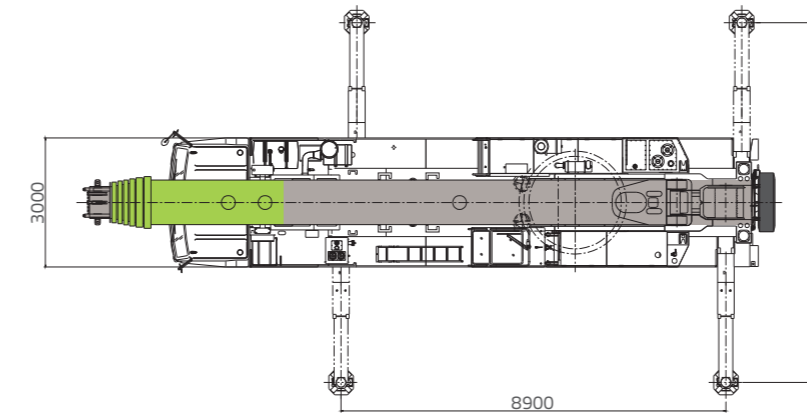
ZAT2000 Main Technical Parameter

| Item | | Value | Remarks | |
|---|---|------------------|---------------------|-----|
| Work performance | Max. rated lifting capacity | kg | 200000 | |
| | Max. load moment of basic boom | kN.m | 6664 | |
| | Max. lifting height of main boom | m | 72 | |
| | Max. lifting height of jib | m | 95/(103) | |
| The parameters do not include deflection of main boom and jib. The value in the brackets is the value with extensions installed. | | | | |
| Work speeds | Max. hoist rope speed (Main winch) | m/min | 120 | |
| | Max. hoist rope speed (Auxiliary winch) | m/min | 70 | |
| | Boom extending time | min | 12 | |
| | Boom derricking up time | s | 97 | |
| | Slewing speed | r/min | 0-1.4 | |
| Driving | Max. height above sea level | m | 2000 | |
| | Max. driving speed | km/h | 75 | |
| | Max. gradeability | % | 40 | |
| | Min. turning diameter | m | 20 | |
| | Min. ground clearance | mm | 305 | |
| | Fuel consumption per hundred kilometers | L | 78 | |
| Mass | Deadweight in driving condition | kg | 60000 | |
| Remove the hook, the movable counterweight, the jib, the rooster sheave, the tip boom, the outrigger pads, sliding beams, main and auxiliary winches, wire ropes reeving on winches and the spare tire, and drain off hydraulic oil of superstructure before vehicle driving. | | | | |
| Dimensions | Overall dimensions | mm | 15660 × 3000 × 4000 | |
| | Outrigger spread (L) | m | 8.9 | |
| | Outrigger spread (W) | m | 8.3 | |
| | Main boom length | m | 13.4-72 | |
| | Boom angle | ° | -0.5-83 | |
| | Jib length | m | 12, 20, 28 | |
| | Jib + extension length | m | 36 | |
| | Offset | ° | 0, 15, 30 | |
| Chassis | Model | ZLJ5603JQZV4 | | |
| | Type | II | | |
| | Engine | Model | WP13.530E40 | |
| | | Max. rated power | kW/r/min | 390 |
| | | Max. net power | kW/r/min | 385 |
| Max. output torque | N.m/r/min | 2220 | | |

ZAT2000 Overall Dimensions in Driving Condition / Lifting Height Charts

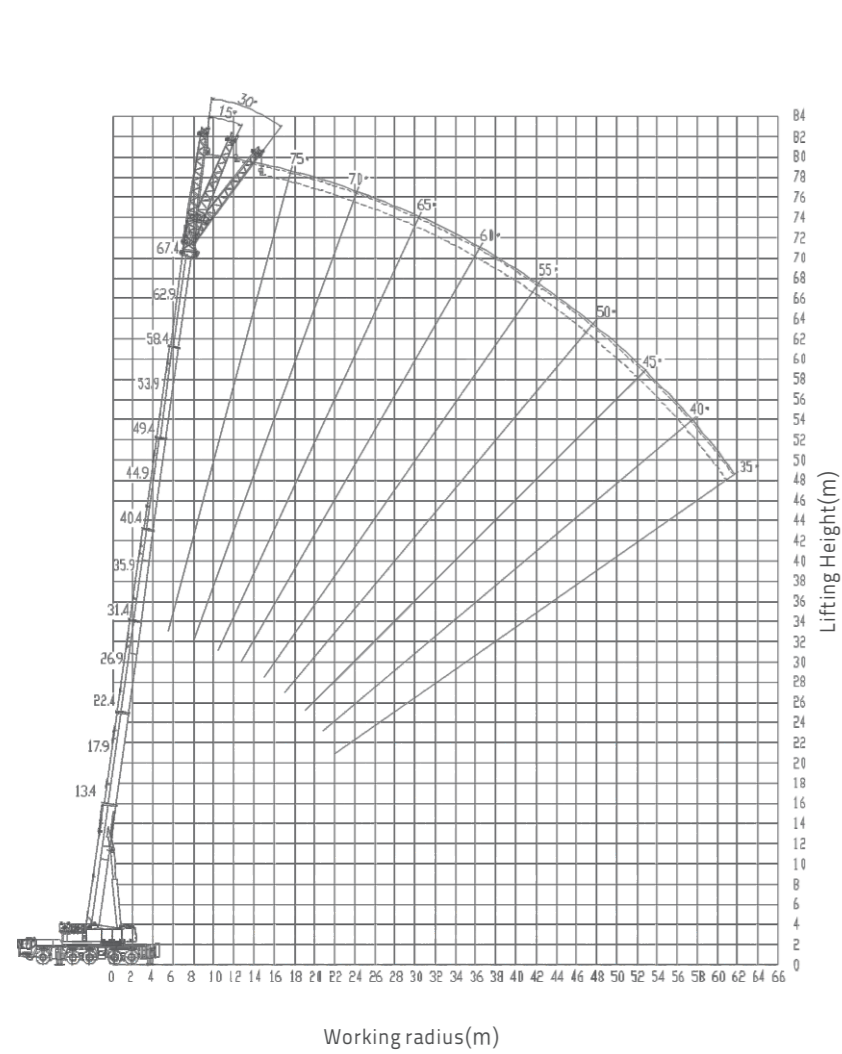


Overall view (Unit: Metric mm)

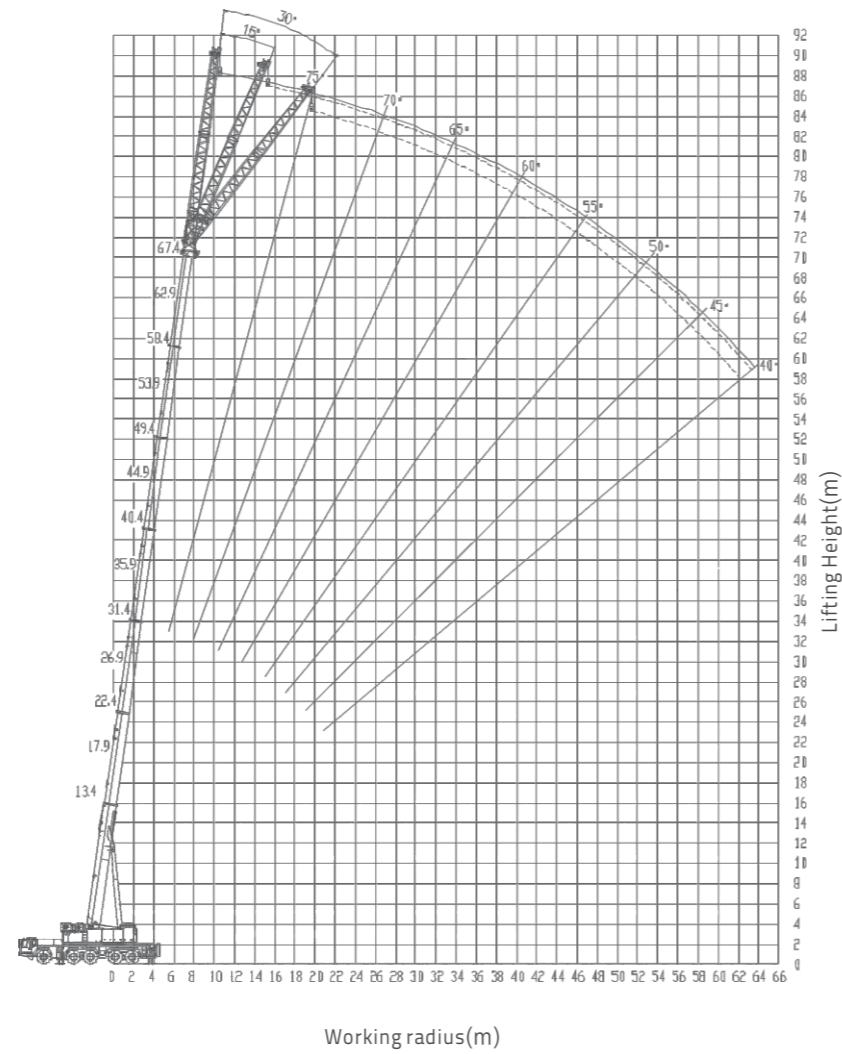


Working radius(m)

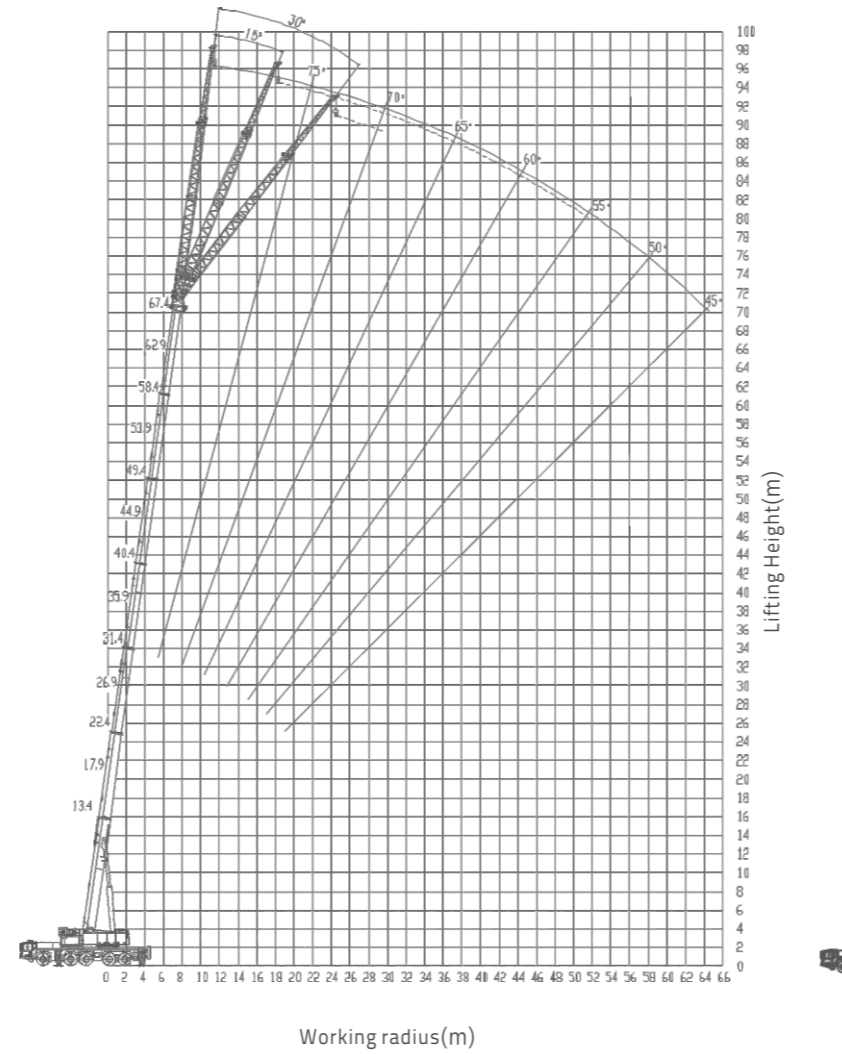
72 m main boom



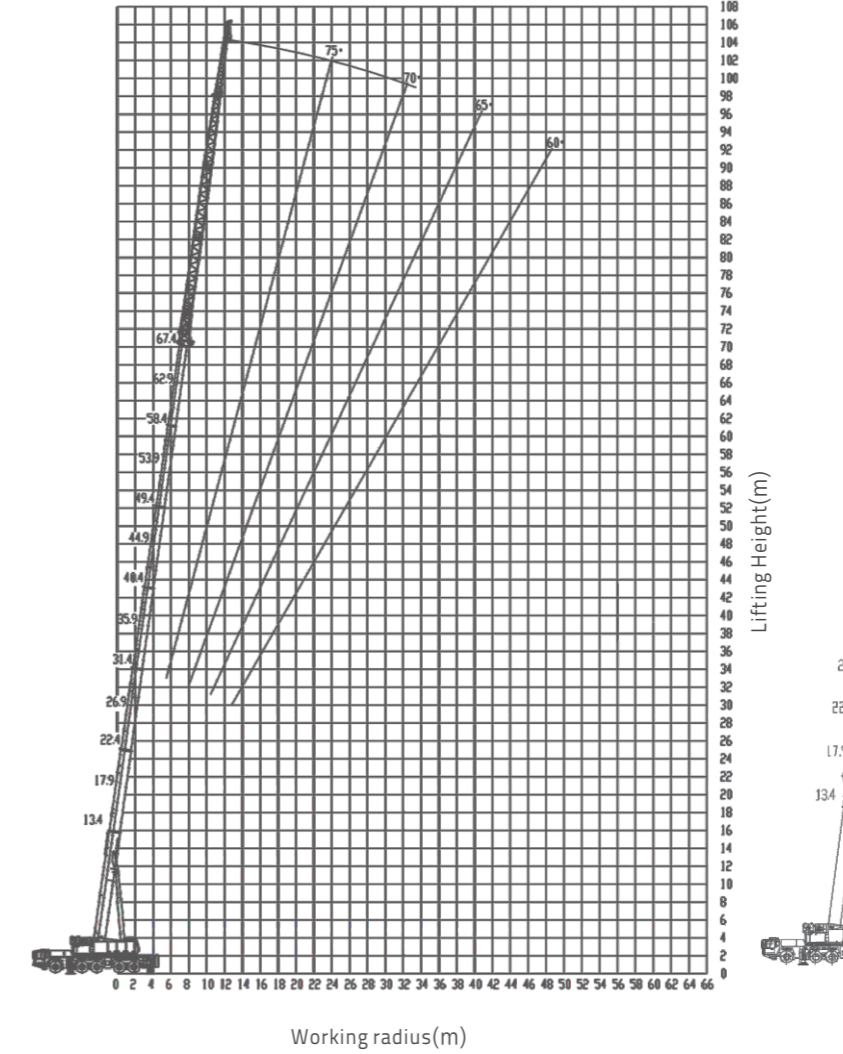
67.4 m main boom + 12 m jib (jib section 1)



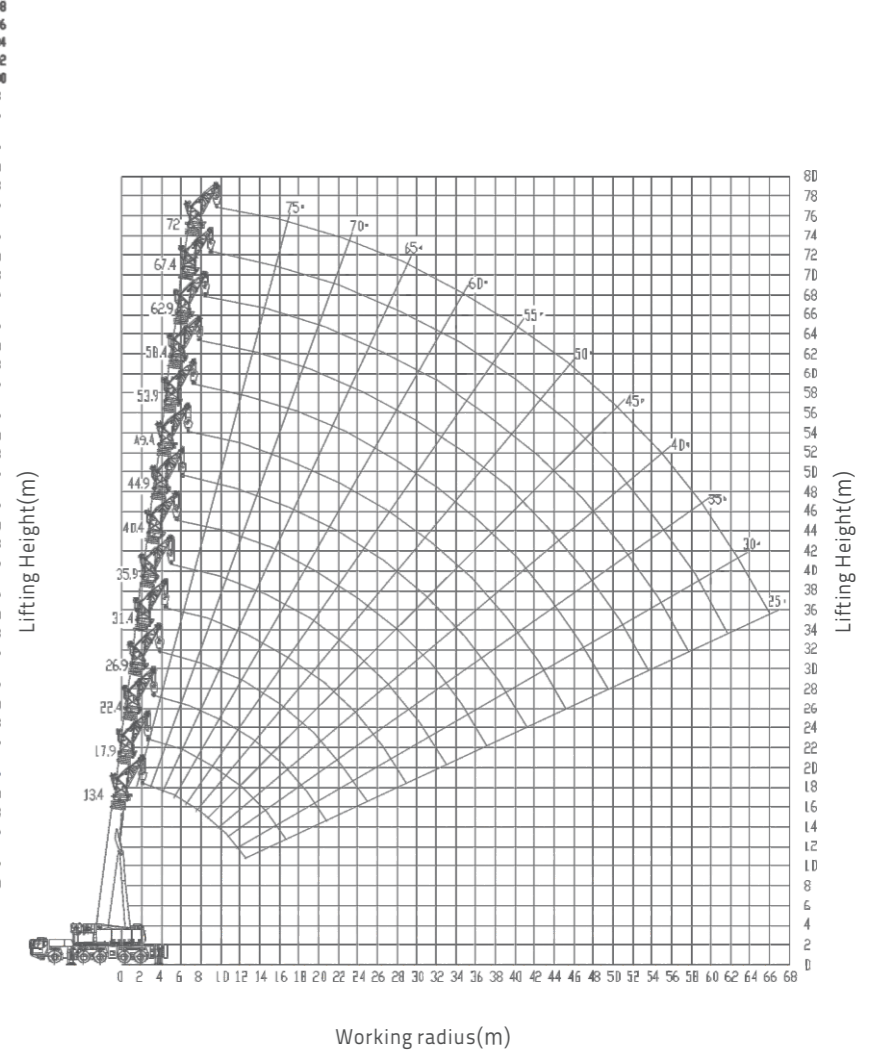
67.4 m main boom + 20 m jib (extension 2 + jib section 1)



67.4 m main boom + 28 m jib (extension 2 + jib section 1 + jib section 2)



67.4 m main boom + 36 m jib (extension 1 + extension 2 + jib section 1 + jib section 2)



main boom + 4.3 m tip boom

ZAT2000 Lifting Capacity Tables

Table 1 Main boom Unit:×1000kg

| Outriggers fully extended, with 72 tons counterweight, over full range | | | | | | | | | | | | | | | | | | | | | |
|--|----------|------|------|---------|------|------|---------|------|------|------|------|------|------|------|-----|-----|-----|-----|-----|-----|--|
| Radius(m) | 13.4 | 17.9 | 22.4 | 26.9 | 31.4 | 35.9 | 40.4 | 44.9 | 49.4 | 53.9 | 58.4 | 62.9 | 67.4 | 72 | | | | | | | |
| 3.0 | 200* | 135* | 125 | | | | | | | | | | | | | | | | | | |
| 3.5 | 145* | 135* | 125 | 110 | | | | | | | | | | | | | | | | | |
| 4.0 | 135* | 130 | 125 | 110 | | | | | | | | | | | | | | | | | |
| 4.5 | 128 | 122 | 117 | 108 | 90 | | | | | | | | | | | | | | | | |
| 5.0 | 120 | 115 | 109 | 105 | 88 | | | | | | | | | | | | | | | | |
| 6.0 | 108 | 105 | 97 | 95 | 86 | 72 | | | | | | | | | | | | | | | |
| 7.0 | 95 | 93 | 87 | 86 | 82 | 70 | 54 | | | | | | | | | | | | | | |
| 8.0 | 85 | 83 | 79 | 78 | 77 | 68 | 52 | 44 | | | | | | | | | | | | | |
| 9.0 | 75 | 75 | 73 | 72 | 71 | 64 | 50 | 41 | 34 | | | | | | | | | | | | |
| 10.0 | 64 | 67 | 67 | 67 | 64.5 | 59 | 47.5 | 38 | 33 | 26 | | | | | | | | | | | |
| 11.0 | | 60 | 60 | 60 | 59 | 56 | 45 | 36 | 32 | 25 | 20 | | | | | | | | | | |
| 12.0 | | 54 | 54 | 54 | 53.5 | 53 | 43.5 | 34 | 30 | 24 | 19.5 | 16 | | | | | | | | | |
| 14.0 | | 45 | 45.5 | 45 | 45.5 | 46 | 40 | 30 | 27 | 22.5 | 18.5 | 15.5 | 13 | 11 | | | | | | | |
| 16.0 | | | 39 | 39 | 39.5 | 40 | 36.5 | 26.5 | 24 | 21 | 17.5 | 15 | 12.5 | 10.5 | | | | | | | |
| 18.0 | | | 33.5 | 33 | 34 | 35 | 33 | 24 | 22 | 19 | 16.5 | 14.2 | 12 | 10 | | | | | | | |
| 20.0 | | | | 28 | 29 | 30 | 30 | 22 | 20 | 17.5 | 15.5 | 13.5 | 11.5 | 9.5 | | | | | | | |
| 22.0 | | | | 24 | 25 | 25.5 | 26.5 | 20 | 18 | 16 | 14.5 | 12.5 | 11 | 9 | | | | | | | |
| 24.0 | | | | | 21.5 | 22.5 | 23.4 | 18 | 16.5 | 15 | 13.5 | 12 | 10.3 | 8.4 | | | | | | | |
| 26.0 | | | | 19 | 19.5 | 20.4 | 16.5 | 15 | 13.7 | 12.5 | 11 | 9.7 | 7.9 | | | | | | | | |
| 28.0 | | | | | 17.5 | 18.2 | 15 | 13.5 | 12.5 | 11.5 | 10.5 | 9.2 | 7.4 | | | | | | | | |
| 30.0 | | | | | 15.5 | 16.2 | 14 | 12.5 | 11.5 | 10.7 | 10 | 8.7 | 6.7 | | | | | | | | |
| 32.0 | | | | | | 14.6 | 13 | 11.5 | 10.5 | 10 | 9.5 | 8.2 | 6.3 | | | | | | | | |
| 34.0 | | | | | | 13.2 | 12.3 | 10.7 | 9.8 | 9.3 | 8.9 | 7.7 | 5.9 | | | | | | | | |
| 36.0 | | | | | | | 11 | 10 | 9.2 | 8.6 | 8.5 | 7.1 | 5.5 | | | | | | | | |
| 38.0 | | | | | | | 10 | 9.3 | 8.6 | 8 | 8 | 6.7 | 5 | | | | | | | | |
| 40.0 | | | | | | | | 8.6 | 8 | 7.5 | 7.4 | 6.3 | 4.6 | | | | | | | | |
| 42.0 | | | | | | | | 8 | 7.3 | 6.8 | 6.8 | 6 | 4.3 | | | | | | | | |
| 44.0 | | | | | | | | | | 6.8 | 6.3 | 6.3 | 5.7 | 4 | | | | | | | |
| 46.0 | | | | | | | | | | | 6.3 | 5.8 | 5.4 | 3.8 | | | | | | | |
| 48.0 | | | | | | | | | | | | 5.4 | 5.1 | 3.5 | | | | | | | |
| 50.0 | | | | | | | | | | | | | 5 | 4.8 | 3.2 | | | | | | |
| 52.0 | | | | | | | | | | | | | | 4.5 | 4.6 | 3 | | | | | |
| 54.0 | | | | | | | | | | | | | | | 4.2 | 4.4 | 2.8 | | | | |
| 56.0 | | | | | | | | | | | | | | | | 4 | 4.1 | 2.6 | | | |
| 58.0 | | | | | | | | | | | | | | | | | 3.9 | 2.4 | | | |
| 60.0 | | | | | | | | | | | | | | | | | | 3.6 | 2.3 | | |
| 62.0 | | | | | | | | | | | | | | | | | | | 3.3 | 2.1 | |
| 64.0 | | | | | | | | | | | | | | | | | | | | 2 | |
| Reeving Hook | 14 | 14 | 12 | 10 | 8 | 7 | 5 | 4 | 3 | 3 | 2 | 2 | 2 | 2 | | | | | | | |
| Telescoping mode | 130 tons | | | 50 tons | | | 25 tons | | | | | | | | | | | | | | |
| | I | 1 | 1 | 1 | 2 | 2 | 2 | 2 | 3 | 3 | 3 | 3 | 3 | 3 | 4 | | | | | | |
| | II | 1 | 2 | 2 | 2 | 2 | 2 | 2 | 2 | 3 | 3 | 3 | 3 | 3 | 4 | | | | | | |
| | III | 1 | 1 | 2 | 2 | 2 | 2 | 2 | 2 | 3 | 3 | 3 | 3 | 3 | 4 | | | | | | |
| | IV | 1 | 1 | 2 | 2 | 2 | 2 | 2 | 2 | 2 | 3 | 3 | 3 | 3 | 4 | | | | | | |
| | V | 1 | 1 | 1 | 1 | 2 | 2 | 2 | 2 | 2 | 2 | 3 | 3 | 3 | 4 | | | | | | |
| VI | 1 | 1 | 1 | 1 | 1 | 1 | 2 | 2 | 2 | 2 | 2 | 3 | 3 | 4 | | | | | | | |

Note:
The values with * are suitable for 220 tons hook. When the lifting capacity is 200 tons, 18 reevings are recommended.
When the lifting capacity is 145 tons, 15 reevings are recommended.

ZOOMLION

Table 2 Main boom Unit:×1000kg

| Outriggers intermediately extended, with 72 tons counterweight, over full range | | | | | | | | | | | | | | | | | | | | | |
|---|----------|------|------|---------|------|------|---------|------|------|------|------|------|------|------|------|-----|-----|-----|-----|-----|-----|
| Radius(m) | 13.4 | 17.9 | 22.4 | 26.9 | 31.4 | 35.9 | 40.4 | 44.9 | 49.4 | 53.9 | 58.4 | 62.9 | 67.4 | 72 | | | | | | | |
| 3.0 | 200* | 135* | 125 | | | | | | | | | | | | | | | | | | |
| 3.5 | 145* | 135* | 125 | 110 | | | | | | | | | | | | | | | | | |
| 4.0 | 135* | 130 | 125 | 110 | | | | | | | | | | | | | | | | | |
| 4.5 | 128 | 122 | 117 | 108 | 90 | | | | | | | | | | | | | | | | |
| 5.0 | 120 | 115 | 109 | 105 | 88 | | | | | | | | | | | | | | | | |
| 6.0 | 108 | 105 | 97 | 95 | 86 | 72 | | | | | | | | | | | | | | | |
| 7.0 | 87 | 87 | 87 | 86 | 82 | 70 | 54 | | | | | | | | | | | | | | |
| 8.0 | 77 | 77 | 77 | 78 | 77 | 68 | 52 | 44 | | | | | | | | | | | | | |
| 9.0 | 67 | 67 | 67 | 67 | 68 | 64 | 50 | 41 | 34 | | | | | | | | | | | | |
| 10.0 | 57 | 57 | 57 | 57 | 57 | 47.5 | 38 | 33 | 26 | | | | | | | | | | | | |
| 11.0 | | 48 | 49.5 | 48 | 49 | 50 | 45 | 36 | 32 | 25 | 20 | | | | | | | | | | |
| 12.0 | | | 42 | 43.5 | 42.5 | 43 | 44 | 43.5 | 34 | 30 | 24 | 19.5 | 16 | | | | | | | | |
| 14.0 | | | 33 | 34 | 33 | 34 | 35 | 36 | 30 | 27 | 22.5 | 18.5 | 15.5 | 13 | 11 | | | | | | |
| 16.0 | | | | 28 | 27 | 28 | 28.5 | 29 | 28 | 24 | 21 | 17.5 | 15 | 12.5 | 10.5 | | | | | | |
| 18.0 | | | | | 22.5 | 22 | 23 | 24 | 25 | 24 | 22 | 19 | 16.5 | 14.2 | 12 | 10 | | | | | |
| 20.0 | | | | | | 18 | 19 | 20 | 20.5 | 20 | 20 | 17.5 | 15.5 | 13.5 | 11.5 | 9.5 | | | | | |
| 22.0 | | | | | | 15 | 16 | 17 | 17.5 | 17 | 17 | 16 | 14.5 | 12.5 | 11 | 9 | | | | | |
| 24.0 | | | | | | | 14 | 14.5 | 15 | 15 | 15 | 15 | 13.5 | 12 | 10.3 | 8.4 | | | | | |
| 26.0 | | | | | | | 12 | 12.5 | 13 | 13 | 13 | 13 | 12.5 | 11 | 9.7 | 7.9 | | | | | |
| 28.0 | | | | | | | | 11 | 11.5 | 11 | 11 | 11 | 11.5 | 10.5 | 9.2 | 7.4 | | | | | |
| 30.0 | | | | | | | | | 10 | 10 | 10 | 10 | 10.2 | 10 | 8.7 | 6.7 | | | | | |
| 32.0 | | | | | | | | | | 9 | 8.7 | 8.7 | 8.9 | 9.2 | 9.5 | 8.2 | 6.3 | | | | |
| 34.0 | | | | | | | | | | 8 | 7.7 | 7.7 | 7.8 | 8.1 | 8.5 | 7.7 | 5.9 | | | | |
| 36.0 | | | | | | | | | | | 6.8 | 6.7 | 6.8 | 7.2 | 7.5 | 7.1 | 5.5 | | | | |
| 38.0 | | | | | | | | | | | 6 | 5.9 | 6 | 6.3 | 6.7 | 6.7 | 5 | | | | |
| 40.0 | | | | | | | | | | | | 5.2 | 5.2 | 5.5 | 6 | 6.3 | 4.6 | | | | |
| 42.0 | | | | | | | | | | | | 4.5 | 4.5 | 4.8 | 5.2 | 5.6 | 4.3 | | | | |
| 44.0 | | | | | | | | | | | | | 4 | 4.3 | 4.6 | 5 | 4 | | | | |
| 46.0 | | | | | | | | | | | | | | 3.4 | 3.7 | 4 | 4.5 | 3.8 | | | |
| 48.0 | | | | | | | | | | | | | | | 3.1 | 3.5 | 4 | 3.5 | | | |
| 50.0 | | | | | | | | | | | | | | | | 2.5 | 3 | 3.5 | 3.2 | | |
| 52.0 | | | | | | | | | | | | | | | | | 2.6 | 3 | 3 | | |
| 54.0 | | | | | | | | | | | | | | | | | | 2.1 | 2.6 | 2.6 | |
| 56.0 | | | | | | | | | | | | | | | | | | | 1.8 | 2.2 | 2.2 |
| 58.0 | | | | | | | | | | | | | | | | | | | | 1.8 | 1.8 |
| 60.0 | | | | | | | | | | | | | | | | | | | | 1.5 | 1.5 |
| 62.0 | | | | | | | | | | | | | | | | | | | | | 1.2 |
| 64.0 | | | | | | | | | | | | | | | | | | | | | 2 |
| Reeving Hook | 14 | 14 | 12 | 10 | 8 | 7 | 5 | 4 | 3 | 3 | 2 | 2 | 2 | 2 | | | | | | | |
| Telescoping mode | 130 tons | | | 50 tons | | | 25 tons | | | | | | | | | | | | | | |
| | I | 1 | 1 | 1 | 2 | 2 | 2 | 2 | 3 | 3 | 3 | 3 | 3 | 3 | 4 | | | | | | |
| | II | 1 | 2 | 2 | 2 | 2 | 2 | 2 | 2 | 3 | 3 | 3 | 3 | 3 | 4 | | | | | | |
| | III | 1 | 1 | 2 | 2 | 2 | 2 | 2 | 2 | 3 | 3 | 3 | 3 | 3 | 4 | | | | | | |
| | IV | 1 | 1 | 1 | 1 | 2 | 2 | 2 | 2 | 2 | 3 | 3 | 3 | 3 | 4 | | | | | | |
| | V | 1 | 1 | 1 | 1 | 1 | 2 | 2 | 2 | 2 | 2 | 3 | 3 | 3 | 4 | | | | | | |
| VI | 1 | 1 | 1 | 1 | 1 | 1 | 2 | 2 | 2 | 2 | 2 | 2 | 3 | 4 | | | | | | | |

Note:
The values with * are suitable for 220 tons hook. When the lifting capacity is 200 tons, 18 reevings are recommended.
When the lifting capacity is 145 tons, 15 reevings are recommended.

ZAT2000 Lifting Capacity Tables

Table 3 Main boom + jib Unit:×1000kg

| Outriggers fully extended, with 72 tons counterweight, over sides and rear | | | | | | | | | | | | | | | | | | | | | | | | |
|--|------------|-----|-----|-------|-----|-----|-------|-----|-----|-------|-----|-----|-------|-----|-----|-------|-----|-----|-------|-------|---|--|---|--|
| Jib length | 12.0m | | | | | | 20.0m | | | | | | 28.0m | | | | | | 36.0m | | | | | |
| | 62.9m | | | 67.4m | | | 62.9m | | | 67.4m | | | 62.9m | | | 67.4m | | | 62.9m | 67.4m | | | | |
| Boom length | Offset (°) | | 0 | | 15 | | 30 | | 0 | | 15 | | 30 | | 0 | | 15 | | 30 | | 0 | | 0 | |
| 82 | 9 | 7.5 | 6.3 | 7.8 | 6.2 | 5.0 | 6 | 4.1 | 3.2 | 4.8 | 3.5 | 2.5 | 4.2 | 2.8 | 2.1 | 3.3 | 2.3 | 1.4 | 2.2 | 1.8 | | | | |
| 80 | 8.5 | 7.3 | 6.1 | 7.6 | 6.2 | 4.8 | 5.8 | 4.1 | 3.2 | 4.8 | 3.5 | 2.5 | 4.1 | 2.7 | 2 | 3.3 | 2.3 | 1.4 | 2.1 | 1.7 | | | | |
| 78 | 8.2 | 7 | 5.9 | 7.4 | 6.0 | 4.6 | 5.6 | 4.1 | 3.1 | 4.7 | 3.5 | 2.4 | 3.9 | 2.6 | 2 | 3.2 | 2.1 | 1.4 | 2 | 1.6 | | | | |
| 76 | 7.9 | 6.6 | 5.6 | 7.3 | 6.0 | 4.5 | 5.2 | 3.9 | 3.1 | 4.6 | 3.4 | 2.4 | 3.6 | 2.4 | 1.9 | 3 | 2.1 | 1.3 | 1.9 | 1.6 | | | | |
| 74 | 7.6 | 6.2 | 5.4 | 7 | 5.8 | 4.5 | 4.8 | 3.7 | 3.0 | 4.3 | 3.4 | 2.3 | 3.3 | 2.3 | 1.9 | 2.8 | 1.9 | 1.2 | 1.8 | 1.5 | | | | |
| 72 | 7.3 | 5.9 | 5.1 | 6.5 | 5.5 | 4.5 | 4.5 | 3.4 | 2.9 | 4.0 | 3.2 | 2.3 | 3 | 2.2 | 1.8 | 2.6 | 1.9 | 1.1 | 1.6 | 1.4 | | | | |
| 70 | 6.9 | 5.6 | 4.9 | 6 | 5.2 | 4.2 | 4.2 | 3.2 | 2.8 | 3.7 | 3.0 | 2.2 | 2.8 | 2.1 | 1.7 | 2.4 | 1.8 | 1.1 | 1.4 | 1.1 | | | | |
| 68 | 6.6 | 5.4 | 4.8 | 5.6 | 4.9 | 4.2 | 3.9 | 3 | 2.7 | 3.5 | 2.8 | 2.0 | 2.5 | 2.0 | 1.6 | 2.2 | 1.7 | 1.1 | 1.3 | 1.0 | | | | |
| 66 | 6.2 | 5.1 | | | | | | | | | | | | | | | | | | | | | | |