

## Lifting capacity tables

Table1

Unit:kg

Working Radius (m)	Main boom (m)					
	Over front area(with 5 <sup>th</sup> outrigger on), sides and rear					
	9.80	14.0	18.2	22.4	26.6	30.8
3.0	16000	12000				
3.5	16000	12000	11500			
4.0	16000	12000	11500	8500		
4.5	15000	12000	11500	8500		
5.0	14200	12000	11500	8200	6500	
5.5	12900	12000	10800	7800	6500	
6.0	11000	11400	10000	7400	6500	4500
6.5	9500	10000	9500	7000	6000	4500
7.0	8400	8700	8900	6500	5500	4300
8.0	6500	6900	7100	5800	5000	4100
9.0		5500	5650	5300	4500	3900
10		4600	4750	4800	4100	3700
11		3750	3900	4100	3800	3550
12		3150	3350	3450	3500	3400
14			2400	2600	2650	2650
16			1700	1900	2000	2100
18				1500	1550	1600
20					1150	1200
22					850	1000
24						650

Table2

Unit:kg

Main boom angle (°)	Main boom (m) + Jib (m)			
	Outrigger fully extended			
	30.8 + 7.5			
	0°		30°	
	Over sides and rear	Over front	Over sides and rear	Over front
80	2000	2000	1500	1500
78	2000	2000	1450	1450
76	2000	2000	1400	1400
74	2000	2000	1350	1350
72	2000	2000	1300	1300
70	2000	1800	1250	1250
68	1900	1400	1200	1150
66	1800	1150	1150	900
64	1700	900	1100	700
62	1550	700	1050	500
60	1300	500	1000	400
58	1100	400	900	250
56	850	300	700	
54	650		500	
52	550		400	
50	450		300	
45	300			

Zoomlion Heavy Industry Science & Technology Co.,Ltd.

Add: No.677, Lugu Road, Zoomlion Industrial Park, Changsha, Hunan, China, 410205

Copyright©2017 Zoomlion. All rights reserved. Reproduction and copying of any part of contents is not allowed for any purposes without Zoomlion's approval.



website:en.zoomlion.com

ZOOMLION

QY16V431R





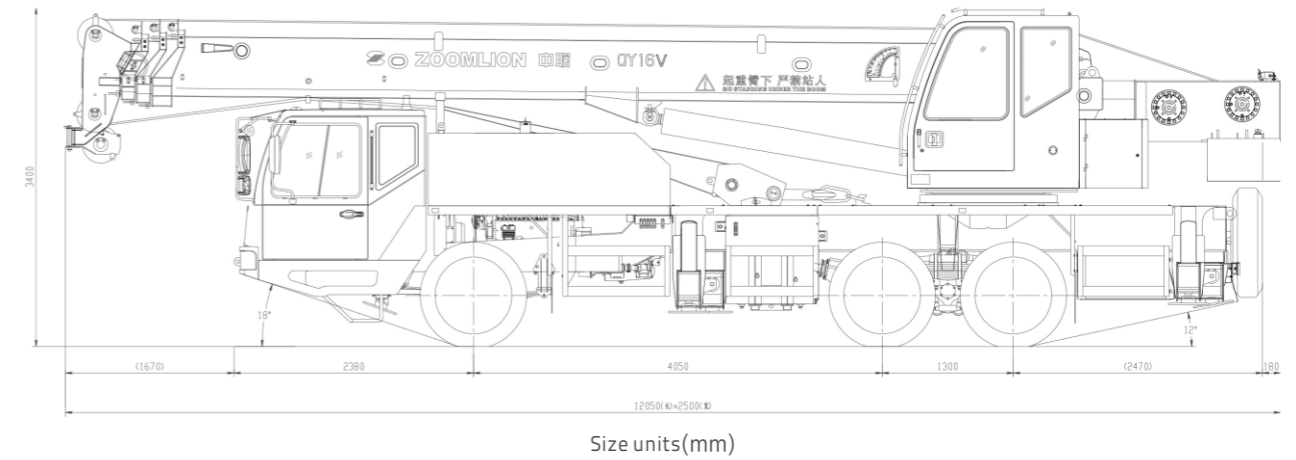
## Flexibility & Mobility, High Efficiency & Stability

- Leading operating speed and comprehensive efficiency surpass others among the industry by 10%.
- Brand new optimized Hexagon main boom, together with strong chassis frame, outriggers, making its lifting capacity as powerful as the 20T among the industry.
- By using LUDV main valve, the stable multi-movement operation is guaranteed.
- Golden driving chain with WEICHAJ engine, FAST transmission and ZOOMLION axles, enables it with lower maintenance cost.

## Main Technical Parameters

	Item	Value	Remarks	
Work performance	Max. rated lifting capacity	kg	16000	
	Max. load moment of basic boom	kN.m	710	
	Max. load moment of main boom (fully extended)	kN.m	408	
	Max. lifting height of main boom (fully extended)	m	31.08	These parameters do not include deflection of main boom and jib.
	Max. lifting height of jib	m	38.5	
Work speeds	Max. hoist rope speed (Main winch)	m/min	120	At 4 <sup>th</sup> layer
	Max. hoist rope speed (Auxiliary winch)	m/min	108	At 3 <sup>rd</sup> layer
	Boom derricking up time	s	38	
	Boom telescoping out time	s	55	
	Slewing speed	r/min	3	
Driving	Max. driving speed	km/h	75	
	Max. gradeability	%	35	
	Min. turning diameter	m	≤20	
	Min. ground clearance	mm	250	
Mass	Oil consumption per hundred kilometer	L	30	
	Deadweight in driving condition	kg	23000	
	Complete vehicle kerb mass	kg	22870	
	Front axle load	kg	6200	
	Rear axle load	kg	16800	
Dimensions	Overall dimensions (L × W × H)	mm	12050 × 2500 × 3400	
	Outrigger spread (L)	m	4.95	
	Outrigger spread (W)	m	5.6	
	Main boom length	m	9.8~30.8	
	Boom angle	°	-2~80	
	Jib length	m	7.5	
	Offset	°	0、30	

## Overall Dimensions in Driving Condition



## Lifting Height Curve

